

Product datasheet for TA392484M

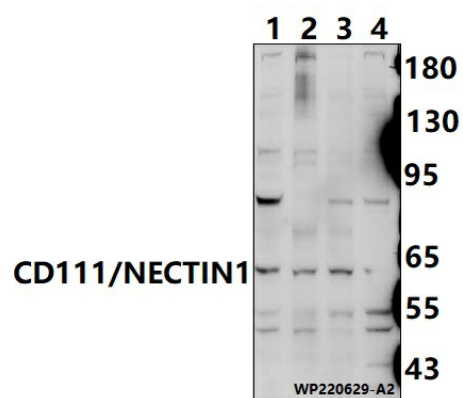
PVRL1 (NECTIN1) Rabbit Polyclonal Antibody

Product data:

Product Type:	Primary Antibodies
Applications:	WB
Recommended Dilution:	WB: 1:1000~1:2000
Reactivity:	Human, Mouse
Host:	Rabbit
Isotype:	IgG
Clonality:	Polyclonal
Immunogen:	Synthetic peptide, corresponding to Human CD111/NECTIN1.
Specificity:	CD111/NECTIN1 polyclonal antibody detects endogenous levels of CD111/NECTIN1 protein.
Formulation:	Rabbit IgG, 1mg/ml in PBS with 0.02% sodium azide, 50% glycerol, pH7.2.
Concentration:	1mg/ml
Conjugation:	Unconjugated
Storage:	Store at 4°C short term. Aliquot and store at -20°C long term. Avoid freeze-thaw cycles.
Stability:	1 year
Predicted Protein Size:	~ 60 kDa
Gene Name:	nectin cell adhesion molecule 1
Database Link:	Entrez Gene 5818 Human Q15223
Background:	Promotes cell-cell contacts by forming homophilic or heterophilic trans-dimers. Heterophilic interactions have been detected between NECTIN1 and NECTIN3 and between NECTIN1 and NECTIN4. Has some neurite outgrowth-promoting activity.
Synonyms:	CD111; Herpes virus entry mediator C; Herpesvirus Ig-like receptor; Nectin-1; NECTIN1; Nectin cell adhesion molecule 1; Poliovirus receptor-related protein 1
Note:	For research use only, not for use in diagnostic procedure.


[View online »](#)

Product images:



Western blot (WB) analysis of CD111/NECTIN1 polyclonal antibody at 1:1000 dilution
Lane1:HEPG2 whole cell lysate(30ug)
Lane2:HCT116 whole cell lysate(30ug) Lane3:CT-26 whole cell lysate(30ug) Lane4:H1792 whole cell lysate(30ug)