

Product datasheet for **TA392483S**

FLT3 Rabbit Polyclonal Antibody

Product data:

Product Type:	Primary Antibodies
Applications:	WB
Recommended Dilution:	WB: 1:2000~1:5000
Reactivity:	Human, Mouse
Host:	Rabbit
Isotype:	IgG
Clonality:	Polyclonal
Immunogen:	Synthetic peptide, corresponding to Human CD135.
Specificity:	CD135 polyclonal antibody detects endogenous levels of CD135 protein.
Formulation:	Rabbit IgG, 1mg/ml in PBS with 0.02% sodium azide, 50% glycerol, pH7.2.
Concentration:	1mg/ml
Conjugation:	Unconjugated
Storage:	Store at 4°C short term. Aliquot and store at -20°C long term. Avoid freeze-thaw cycles.
Stability:	1 year
Predicted Protein Size:	~112 kDa
Gene Name:	fms related tyrosine kinase 3
Database Link:	Entrez Gene 2322 Human P36888
Background:	FMS-related tyrosine kinase 3 (FLT3, also called FLK2), is a member of the Type III receptor tyrosine kinase family, which includes c-Kit, PDGFR and M-CSF receptors. FLT3 is expressed on early hematopoietic progenitor cells and supports growth and differentiation within the hematopoietic system. FLT3 is activated after binding with its ligand FL, which results in a cascade of tyrosine autophosphorylation and tyrosine phosphorylation of downstream substrates. The p85 subunit of PI3 kinase, SHP2, GRB2, and Shc have all been reported to associate with FLT3 after FL stimulation. Tyr589/591 is located in the juxtamembrane region of FLT3 and may play an important role in regulation of FLT3 tyrosine kinase activity. Somatic mutations of FLT3 consisting of internal tandem duplications (ITDs) occur in 20% of patients with acute myeloid leukemia.

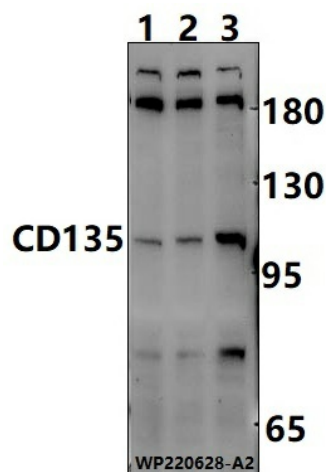


[View online »](#)

Synonyms: CD135; EC:2.7.10.1; Fetal liver kinase-2 (FLK-2); FL cytokine receptor; FLT3; Fms-like tyrosine kinase 3 (FLT-3); Receptor-type tyrosine-protein kinase FLT3; Stem cell tyrosine kinase 1 (STK-1)

Note: For research use only, not for use in diagnostic procedure.

Product images:



Western blot (WB) analysis of CD135 polyclonal antibody at 1:2000 dilution Lane1:CT-26 whole cell lysate(30ug) Lane2:HEPG2 whole cell lysate(30ug) Lane3:H1792 whole cell lysate(30ug)