

Product datasheet for **TA392481S**

Poliovirus Receptor (PVR) Rabbit Polyclonal Antibody

Product data:

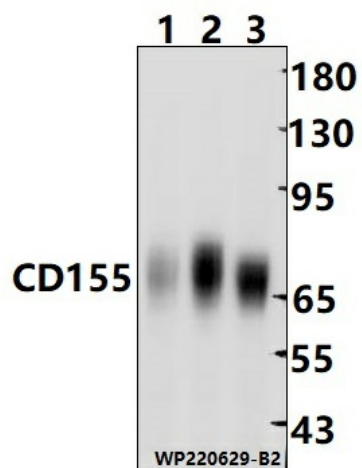
Product Type:	Primary Antibodies
Applications:	WB
Recommended Dilution:	WB: 1:5000~1:10000
Reactivity:	Human, Mouse
Host:	Rabbit
Isotype:	IgG
Clonality:	Polyclonal
Immunogen:	Synthetic peptide, corresponding to Human CD155.
Specificity:	CD155 polyclonal antibody detects endogenous levels of CD155 protein.
Formulation:	Rabbit IgG, 1mg/ml in PBS with 0.02% sodium azide, 50% glycerol, pH7.2.
Concentration:	1mg/ml
Conjugation:	Unconjugated
Storage:	Store at 4°C short term. Aliquot and store at -20°C long term. Avoid freeze-thaw cycles.
Stability:	1 year
Predicted Protein Size:	~ 70 kDa
Gene Name:	poliovirus receptor
Database Link:	Entrez Gene 5817 Human P15151
Background:	Poliovirus receptor (PVR, CD155) is an immunoglobulin-like, transmembrane glycoprotein originally described as a mediator of poliovirus attachment to cells and later identified as important in adherens junction formation. Also known as nectin-like 5 (Nectin-5), PVR binds nectin-3 and interacts with integrin $\alpha\beta3$ and PDGFR to regulate integrin clustering and focal contact formation at the leading edge of migrating cells. Research studies demonstrate that PVR and nectin-3 regulate contact inhibition during cell motility and proliferation in transformed 3T3 cells. Additional research indicates that PVR (CD155, Nectin-5) expression may play a role in invasiveness of lung adenocarcinoma. In the immune system, CD155 plays a role in natural killer (NK) cell-mediated cytotoxicity.
Synonyms:	CD155; Nectin-like protein 5 (NECL-5); Poliovirus receptor; PVR; PVS



[View online »](#)

Note: For research use only, not for use in diagnostic procedure.

Product images:



Western blot (WB) analysis of CD155 polyclonal antibody at 1:10000 dilution Lane1:CT-26 whole cell lysate(30ug) Lane2:HepG2 whole cell lysate(10ug) Lane3:A549 whole cell lysate(10ug)