

## Product datasheet for **TA392480M**

### LAMP1 Rabbit Polyclonal Antibody

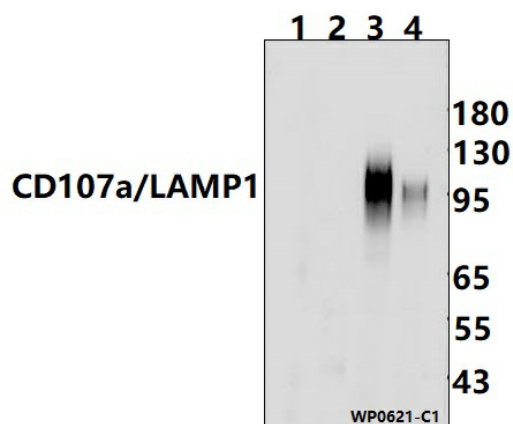
#### Product data:

Product Type:	Primary Antibodies
Applications:	WB
Recommended Dilution:	WB: 1:1000~1:2000
Reactivity:	Human
Host:	Rabbit
Isotype:	IgG
Clonality:	Polyclonal
Immunogen:	Synthetic peptide, corresponding to Human CD107a/LAMP1.
Specificity:	CD107a/LAMP1 polyclonal antibody detects endogenous levels of CD107a/LAMP1 protein.
Formulation:	Rabbit IgG, 1mg/ml in PBS with 0.02% sodium azide, 50% glycerol, pH7.2.
Concentration:	1mg/ml
Conjugation:	Unconjugated
Storage:	Store at 4°C short term. Aliquot and store at -20°C long term. Avoid freeze-thaw cycles.
Stability:	1 year
Predicted Protein Size:	~ 95 kDa
Gene Name:	lysosomal associated membrane protein 1
Database Link:	<a href="#">Entrez Gene 3916 Human P11279</a>
Background:	Lysosome-associated membrane protein 1 and 2 (LAMP1 and LAMP2) are two abundant lysosomal membrane proteins. Both are transmembrane proteins and are heavily glycosylated at the amino-terminal luminal side of the lysosomal inner leaflet, which protects the proteins from proteolysis. The carboxy terminus of LAMP1 is exposed to the cytoplasm and contains a tyrosine sorting motif that targets LAMP to lysosomal membranes. LAMP1 and LAMP2 are 37% homologous in their protein sequences. Both LAMP1 and LAMP2 are involved in regulating lysosomal motility during lysosome-phagosome fusion and cholesterol trafficking.
Synonyms:	CD107 antigen-like family member A; CD107a; LAMP-1; LAMP1; Lysosome-associated membrane glycoprotein 1; Lysosome-associated membrane protein 1


[View online »](#)

**Note:** For research use only, not for use in diagnostic procedure.

**Product images:**



Western blot (WB) analysis of CD107a/LAMP1 polyclonal antibody at 1:1000 dilution Lane1:The Stomach tissue lysate of Mouse(30ug) Lane2:The Kidney tissue lysate of Rat(30ug) Lane3:HCT116 whole cell lysate(30ug) Lane4:HEK293T whole cell lysate(30ug)