

Product datasheet for **TA392478S**

IL3RA Rabbit Polyclonal Antibody

Product data:

Product Type:	Primary Antibodies
Applications:	WB
Recommended Dilution:	WB: 1:1000~1:2000
Reactivity:	Human, Rat, Mouse
Host:	Rabbit
Isotype:	IgG
Clonality:	Polyclonal
Immunogen:	Synthetic peptide, corresponding to Human IL3RA.
Specificity:	IL3RA polyclonal antibody detects endogenous levels of IL3RA protein.
Formulation:	Rabbit IgG, 1mg/ml in PBS with 0.02% sodium azide, 50% glycerol, pH7.2.
Concentration:	1mg/ml
Conjugation:	Unconjugated
Storage:	Store at 4°C short term. Aliquot and store at -20°C long term. Avoid freeze-thaw cycles.
Stability:	1 year
Predicted Protein Size:	~ 60 kDa
Gene Name:	interleukin 3 receptor subunit alpha
Database Link:	Entrez Gene 3563 Human P26951
Background:	IL3RA/CD123 is the alpha subunit of an IL-3 receptor that also contains the common beta chain (β c) shared with receptors for other cytokines. IL3RA/CD123 alone binds to IL-3 with high specificity but low affinity and it does not transduce intracellular signaling, while β c alone does not bind to IL-3 appreciably. Together, IL3RA/CD123 and β c form the functional high-affinity receptor for IL-3. IL3RA/CD123 is mainly expressed on the hematopoietic progenitor cells, primarily the granulocytic and monocytic lineages. IL3RA/CD123 is highly expressed on leukemic stem cells in the majority of AML (acute myeloid leukemia) patients and is correlated with poor prognosis. In addition, overexpression of IL3RA/CD123 has also been reported for other hematopoietic malignancies. It is considered as a valuable therapeutic target for these malignancies.

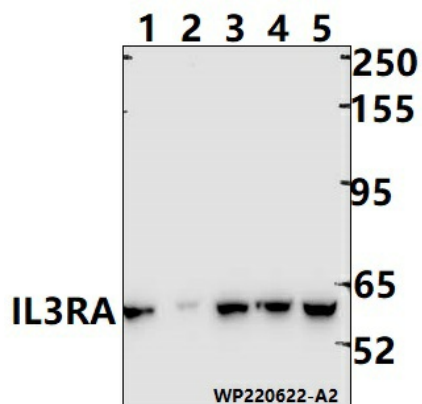


[View online »](#)

Synonyms: CD_antigen: CD123; IL-3 receptor subunit alpha; IL-3R-alpha; IL-3RA; IL-3R subunit alpha; Interleukin-3 receptor subunit alpha

Note: For research use only, not for use in diagnostic procedure.

Product images:



Western blot (WB) analysis of IL3RA polyclonal antibody at 1:1000 dilution Lane1:CT-26 whole cell lysate(30ug) Lane2:C6 whole cell lysate(30ug) Lane3:HepG2 whole cell lysate(30ug) Lane4:HCT116 whole cell lysate(30ug) Lane5:A549 whole cell lysate(30ug)