

Product datasheet for **TA392475S**

CD22 Rabbit Polyclonal Antibody

Product data:

| | |
|-------------------------|--|
| Product Type: | Primary Antibodies |
| Applications: | WB |
| Recommended Dilution: | WB: 1:2000~1:5000 |
| Reactivity: | Human |
| Host: | Rabbit |
| Isotype: | IgG |
| Clonality: | Polyclonal |
| Immunogen: | Recombinant protein of human CD22. |
| Specificity: | CD22 polyclonal antibody detects endogenous levels of CD22 protein. |
| Formulation: | Rabbit IgG, 1mg/ml in PBS with 0.02% sodium azide, 50% glycerol, pH7.2. |
| Concentration: | 1mg/ml |
| Conjugation: | Unconjugated |
| Storage: | Store at 4°C short term. Aliquot and store at -20°C long term. Avoid freeze-thaw cycles. |
| Stability: | 1 year |
| Predicted Protein Size: | ~ 120 kDa |
| Gene Name: | CD22 molecule |
| Database Link: | Entrez Gene 933 Human P20273 |



[View online »](#)

Background:

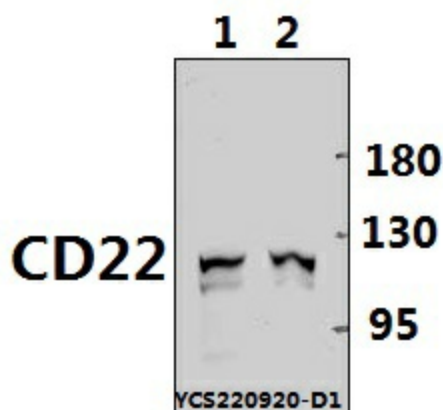
CD22 (also known as siglec-2) is a member of the sialic acid-binding immunoglobulin-type lectin (Siglec) family of immunomodulatory receptors. CD22 can bind to its ligand α 2,6-linked sialic acid on different cells (trans interaction) as well as on the same cells (cis interaction). CD22 is predominantly expressed on B cells and functions as an inhibitory co-receptor for the B cell receptor (BCR). After BCR ligation, the tyrosine kinase Lyn is activated and phosphorylates two distal of the four ITIM motifs in the intracellular carboxy-terminal region of CD22, which then recruit tyrosine phosphatases, including SHP-1, to the plasma membrane, and in turn, they get tyrosine-phosphorylated and activated to damp the signaling pathways initiated by BCR ligation. CD22 has been actively pursued as a therapeutic target for autoimmune diseases. Due to almost exclusive expression on B cells, it is also actively pursued as a therapeutic target for multiple B cell malignancies.

Synonyms:

B-cell receptor CD22; B-lymphocyte cell adhesion molecule; BL-CAM; CD22; Sialic acid-binding Ig-like lectin 2; Siglec-2; SIGLEC2; T-cell surface antigen Leu-14

Note:

For research use only, not for use in diagnostic procedure.

Product images:


Western blot (WB) analysis of CD22 polyclonal antibody at 1:2000 dilution Lane1:Myla2059 whole cell lysate(30ug) Lane2:HuT78 whole cell lysate(30ug)