

Product datasheet for **TA392475**

CD22 Rabbit Polyclonal Antibody

Product data:

Product Type:	Primary Antibodies
Applications:	WB
Recommended Dilution:	WB: 1:2000~1:5000
Reactivity:	Human
Host:	Rabbit
Isotype:	IgG
Clonality:	Polyclonal
Immunogen:	Recombinant protein of human CD22.
Specificity:	CD22 polyclonal antibody detects endogenous levels of CD22 protein.
Formulation:	Rabbit IgG, 1mg/ml in PBS with 0.02% sodium azide, 50% glycerol, pH7.2.
Concentration:	1mg/ml
Conjugation:	Unconjugated
Storage:	Store at 4°C short term. Aliquot and store at -20°C long term. Avoid freeze-thaw cycles.
Stability:	1 year
Predicted Protein Size:	~ 120 kDa
Gene Name:	CD22 molecule
Database Link:	Entrez Gene 933 Human P20273



[View online »](#)

Background:

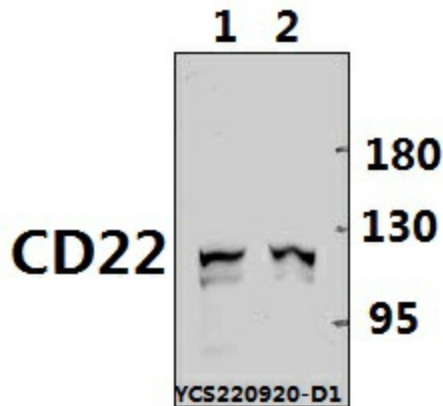
CD22 (also known as siglec-2) is a member of the sialic acid-binding immunoglobulin-type lectin (Siglec) family of immunomodulatory receptors. CD22 can bind to its ligand α 2,6-linked sialic acid on different cells (trans interaction) as well as on the same cells (cis interaction). CD22 is predominantly expressed on B cells and functions as an inhibitory co-receptor for the B cell receptor (BCR). After BCR ligation, the tyrosine kinase Lyn is activated and phosphorylates two distal of the four ITIM motifs in the intracellular carboxy-terminal region of CD22, which then recruit tyrosine phosphatases, including SHP-1, to the plasma membrane, and in turn, they get tyrosine-phosphorylated and activated to damp the signaling pathways initiated by BCR ligation. CD22 has been actively pursued as a therapeutic target for autoimmune diseases. Due to almost exclusive expression on B cells, it is also actively pursued as a therapeutic target for multiple B cell malignancies.

Synonyms:

B-cell receptor CD22; B-lymphocyte cell adhesion molecule; BL-CAM; CD22; Sialic acid-binding Ig-like lectin 2; Siglec-2; SIGLEC2; T-cell surface antigen Leu-14

Note:

For research use only, not for use in diagnostic procedure.

Product images:

Western blot (WB) analysis of CD22 polyclonal antibody at 1:2000 dilution. Lane 1: Myla2059 whole cell lysate (30ug). Lane 2: HuT78 whole cell lysate (30ug).