

Product datasheet for **TA392474S**

CD109 Rabbit Polyclonal Antibody

Product data:

Product Type:	Primary Antibodies
Applications:	WB
Recommended Dilution:	WB: 1:1000~1:2000
Reactivity:	Human
Host:	Rabbit
Isotype:	IgG
Clonality:	Polyclonal
Immunogen:	Recombinant protein of human CD109.
Specificity:	CD109 polyclonal antibody detects endogenous levels of CD109 protein.
Formulation:	Rabbit IgG, 1mg/ml in PBS with 0.02% sodium azide, 50% glycerol, pH7.2.
Concentration:	1mg/ml
Conjugation:	Unconjugated
Storage:	Store at 4°C short term. Aliquot and store at -20°C long term. Avoid freeze-thaw cycles.
Stability:	1 year
Predicted Protein Size:	~ 180 kDa
Gene Name:	CD109 molecule
Database Link:	Entrez Gene 135228 Human Q6YHK3
Background:	CD109 is a glycosylphosphatidylinositol (GPI)-linked glycoprotein that belongs to the alpha2-macroglobulin family of thioester containing proteins. CD109 is associated with TGF-beta receptor I (TbRI) and inhibits TGF-beta signaling. Cleavage of CD109 at its Furin cleavage site results in the release of its large amino-terminal domain, which then binds to the TGF-beta receptor I to inhibit TGF-beta signaling. CD109 is expressed on a subset of CD34+ bone marrow cells and mesenchymal stem cells, activated platelets, activated T cells, endothelial cells, and a wide variety of tumors. Elevated CD109 expression has been considered a diagnostic/prognostic marker for several types of cancers.

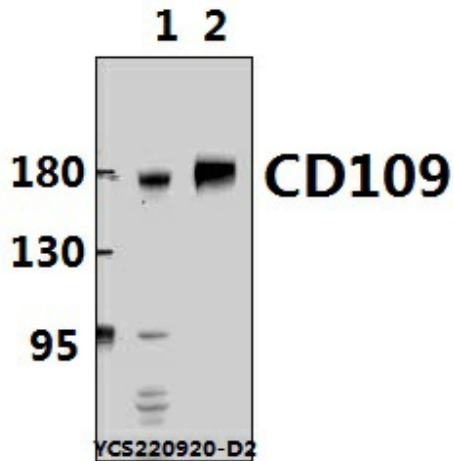


[View online »](#)

Synonyms: 150 kDa TGF-beta-1-binding protein; C3 and PZP-like alpha-2-macroglobulin domain-containing protein 7; CD109; CD109 antigen; CPAMD7; p180; Platelet-specific Gov antigen; r150

Note: For research use only, not for use in diagnostic procedure.

Product images:



Western blot (WB) analysis of CD109 polyclonal antibody at 1:1000 dilution Lane1:A549 cell membrane lysate(24ug) Lane2:A375 whole cell lysate(24ug)