

## Product datasheet for **TA392473M**

### CD1 (CD1D) Rabbit Polyclonal Antibody

#### Product data:

Product Type:	Primary Antibodies
Applications:	WB
Recommended Dilution:	WB: 1:2000~1:5000
Reactivity:	Human
Host:	Rabbit
Isotype:	IgG
Clonality:	Polyclonal
Immunogen:	Recombinant protein of human CD1D.
Specificity:	CD1D polyclonal antibody detects endogenous levels of CD1D protein.
Formulation:	Rabbit IgG, 1mg/ml in PBS with 0.02% sodium azide, 50% glycerol, pH7.2.
Concentration:	1mg/ml
Conjugation:	Unconjugated
Storage:	Store at 4°C short term. Aliquot and store at -20°C long term. Avoid freeze-thaw cycles.
Stability:	1 year
Predicted Protein Size:	~ 55 kDa
Gene Name:	CD1d molecule
Database Link:	<a href="#">Entrez Gene 912 Human P15813</a>

[View online »](#)

**Background:**

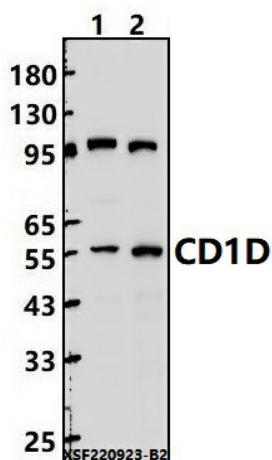
The CD1 multigene family encodes five forms of the CD1 T cell surface glycoprotein in human, designated CD1A, 1B, 1C, 1D and 1E. CD1, a type 1 membrane protein, has structural similarity to the MHC class I antigen and has been shown to present lipid antigens for recognition by T lymphocytes. CD1 antigens are associated with b-2-Microglobulin and expressed on cortical thymocytes, Langerhans cells, a B cell subset and some dendritic cells. Adaptor protein complexes and CD1-associated chaperones control CD1 trafficking and the development and activation of CD1-restricted T cells. CD1D is present on human intestinal epithelial cells (IEC) and exists as a b-2-Microglobulin-independent nonglycosylated form or a b-2-Microglobulin-dependent glycosylated form. The human CD1D gene maps to chromosome 1q23.1 and encodes a 335 amino acid protein that influences normal T cell maturation.

**Synonyms:**

Antigen-presenting glycoprotein CD1d; CD1D; CD1d; R3G1

**Note:**

For research use only, not for use in diagnostic procedure.

**Product images:**


Western blot (WB) analysis of CD1D polyclonal antibody at 1:2000 dilution Lane1:L02 cell membrane lysate(24ug) Lane2:A549 cell membrane lysate(24ug)