

Product datasheet for **TA392472M**

CD63 Rabbit Polyclonal Antibody

Product data:

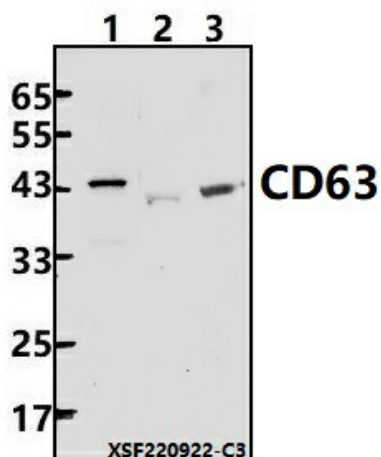
Product Type:	Primary Antibodies
Applications:	WB
Recommended Dilution:	WB: 1:1000~1:2000
Reactivity:	Human, Rat, Mouse
Host:	Rabbit
Isotype:	IgG
Clonality:	Polyclonal
Immunogen:	Recombinant protein of human CD63.
Specificity:	CD63 polyclonal antibody detects endogenous levels of CD63 protein.
Formulation:	Rabbit IgG, 1mg/ml in PBS with 0.02% sodium azide, 50% glycerol, pH7.2.
Concentration:	1mg/ml
Conjugation:	Unconjugated
Storage:	Store at 4°C short term. Aliquot and store at -20°C long term. Avoid freeze-thaw cycles.
Stability:	1 year
Predicted Protein Size:	~ 43 kDa
Gene Name:	CD63 molecule
Database Link:	Entrez Gene 967 Human P08962
Background:	CD63 belongs to the tetraspanin family, which is characterized by four transmembrane domains, one short extracellular domain (ECL1), and one long extracellular domain (ECL2). Tetraspanins interact with a variety of cell surface proteins and intracellular signaling molecules in specialized tetraspanin-enriched microdomains (TEMs) where they mediate a range of processes, including adhesion, motility, membrane organization, and signal transduction. CD63, like other tetraspanins, is enriched in exosomes. It is also a component of Weibel-Palade bodies found in endothelial cells. Research studies demonstrate several functions of CD63 in different cell types, including roles in mast cell degranulation, VEGF signaling in endothelial cells, recruitment of leukocytes to endothelial cells, and endosomal sorting during melanogenesis.


[View online »](#)

Synonyms: CD63; CD63 antigen; Granulophysin; LAMP-3; Limp1; Lysosomal-associated membrane protein 3; Lysosome integral membrane protein 1; Melanoma-associated antigen ME491; MLA1; Ocular melanoma-associated antigen; OMA81H; Tetraspanin-30; Tspan-30; TSPAN30

Note: For research use only, not for use in diagnostic procedure.

Product images:



Western blot (WB) analysis of CD63 polyclonal antibody at 1:1000 dilution Lane1:EC9706 cell membrane lysate(12ug) Lane2:The Liver tissue lysate of Mouse(24ug) Lane3:The Heart tissue lysate of Rat(24ug)