

## Product datasheet for **TA392471M**

### CD147 (BSG) Rabbit Polyclonal Antibody

#### Product data:

Product Type:	Primary Antibodies
Applications:	WB
Recommended Dilution:	WB: 1:2000~1:5000
Reactivity:	Human
Host:	Rabbit
Isotype:	IgG
Clonality:	Polyclonal
Immunogen:	Recombinant protein of human CD147.
Specificity:	CD147 polyclonal antibody detects endogenous levels of CD147 protein.
Formulation:	Rabbit IgG, 1mg/ml in PBS with 0.02% sodium azide, 50% glycerol, pH7.2.
Concentration:	1mg/ml
Conjugation:	Unconjugated
Storage:	Store at 4°C short term. Aliquot and store at -20°C long term. Avoid freeze-thaw cycles.
Stability:	1 year
Predicted Protein Size:	~ 42 kDa
Gene Name:	basigin (Ok blood group)
Database Link:	<a href="#">Entrez Gene 682 Human P35613</a>



[View online »](#)

**Background:**

Basigin (EMMPRIN, CD147) is a type I integral membrane receptor protein belonging to the immunoglobulin superfamily. Basigin is a glycosylated protein with four known isoforms, of which isoform 2 is the most abundantly expressed. Multiple functions have been ascribed to Basigin; foremost among these is stimulating the secretion of extracellular matrix metalloproteinases by adjacent fibroblasts, a function which has been implicated in promoting tumor progression. Research studies have shown that Basigin is overexpressed by many tumor cells, and its expression level may correlate with tumor malignancy. A recent study identified the BASIGIN gene as a regulatory target of Slug, suggesting a role for Basigin in the process of epithelial-mesenchymal transition. Basigin has also been identified as a marker for a subset of highly suppressive regulatory T cells, and as an obligate receptor for the malarial parasite *Plasmodium falciparum* on human erythrocytes.

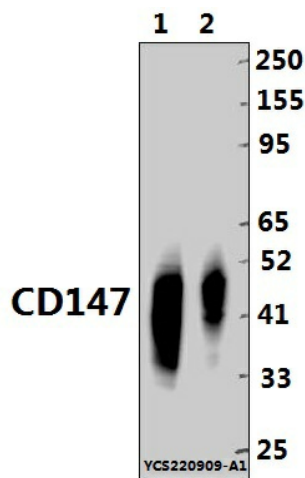
**Synonyms:**

5F7; Basigin; BSG; CD147; Collagenase stimulatory factor; EMMPRIN; Extracellular matrix metalloproteinase inducer; HAb18G; Hepatoma-associated antigen; Leukocyte activation antigen M6; OK blood group antigen; TCSF; Tumor cell-derived collagenase stimulatory factor; UNQ6505/PRO21383

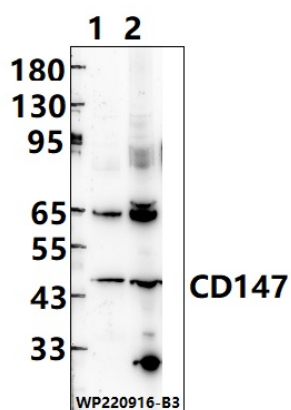
**Note:**

For research use only, not for use in diagnostic procedure.

**Product images:**



Western blot (WB) analysis of CD147 polyclonal antibody at 1:5000 dilution Lane1:A375 cell membrane lysate(10ug) Lane2:SK-OVCAR3 cell membrane lysate(4ug)



Western blot (WB) analysis of CD147 polyclonal antibody at 1:2000 dilution Lane1:EC9706 cell membrane lysate(25ug) Lane2:A549 cell membrane lysate(25ug)