

Product datasheet for **TA392470M**

CD47 Rabbit Polyclonal Antibody

Product data:

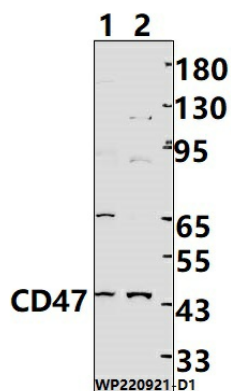
Product Type:	Primary Antibodies
Applications:	WB
Recommended Dilution:	WB: 1:1000~1:2000
Reactivity:	Human
Host:	Rabbit
Isotype:	IgG
Clonality:	Polyclonal
Immunogen:	Recombinant protein of human CD47.
Specificity:	CD47 polyclonal antibody detects endogenous levels of CD47 protein.
Formulation:	Rabbit IgG, 1mg/ml in PBS with 0.02% sodium azide, 50% glycerol, pH7.2.
Concentration:	1mg/ml
Conjugation:	Unconjugated
Storage:	Store at 4°C short term. Aliquot and store at -20°C long term. Avoid freeze-thaw cycles.
Stability:	1 year
Predicted Protein Size:	~45 kDa
Gene Name:	CD47 molecule
Database Link:	Entrez Gene 961 Human Q08722
Background:	Has a role in both cell adhesion by acting as an adhesion receptor for THBS1 on platelets, and in the modulation of integrins. Plays an important role in memory formation and synaptic plasticity in the hippocampus (By similarity). Receptor for SIRPA, binding to which prevents maturation of immature dendritic cells and inhibits cytokine production by mature dendritic cells. Interaction with SIRPG mediates cell-cell adhesion, enhances superantigen-dependent T-cell-mediated proliferation and costimulates T-cell activation. May play a role in membrane transport and/or integrin dependent signal transduction. May prevent premature elimination of red blood cells. May be involved in membrane permeability changes induced following virus infection.

[View online »](#)

Synonyms: Antigenic surface determinant protein OA3; CD47; IAP; Integrin-associated protein; Leukocyte surface antigen CD47; Protein MER6

Note: For research use only, not for use in diagnostic procedure.

Product images:



Western blot (WB) analysis of CD47 polyclonal antibody at 1:1000 dilution Lane1:MCF-7 cell membrane lysate(25ug) Lane2:SGC7901 cell membrane lysate(25ug)