

Product datasheet for **TA392469M**

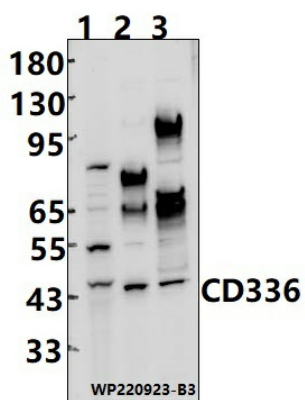
NCR2 Rabbit Polyclonal Antibody

Product data:

Product Type:	Primary Antibodies
Applications:	WB
Recommended Dilution:	WB: 1:1000~1:2000
Reactivity:	Human
Host:	Rabbit
Isotype:	IgG
Clonality:	Polyclonal
Immunogen:	Recombinant protein of human CD336.
Specificity:	CD336 polyclonal antibody detects endogenous levels of CD336 protein.
Formulation:	Rabbit IgG, 1mg/ml in PBS with 0.02% sodium azide, 50% glycerol, pH7.2.
Concentration:	1mg/ml
Conjugation:	Unconjugated
Storage:	Store at 4°C short term. Aliquot and store at -20°C long term. Avoid freeze-thaw cycles.
Stability:	1 year
Predicted Protein Size:	~45 kDa
Gene Name:	natural cytotoxicity triggering receptor 2
Database Link:	Entrez Gene 9436 Human O95944
Background:	Cytotoxicity-activating receptor that may contribute to the increased efficiency of activated natural killer (NK) cells to mediate tumor cell lysis.
Synonyms:	CD336; Lymphocyte antigen 95 homolog; Natural cytotoxicity triggering receptor 2; Natural killer cell p44-related protein; NK-p44; NK cell-activating receptor; NKp44
Note:	For research use only, not for use in diagnostic procedure.



[View online »](#)

Product images:

Western blot (WB) analysis of CD336 polyclonal antibody at 1:1000 dilution Lane1:MCF-7 cell membrane lysate(25ug) Lane2:L02 cell membrane lysate(25ug) Lane3:EC9706 cell membrane lysate(25ug)