

Product datasheet for **TA392468M**

KIR2DL3 Rabbit Polyclonal Antibody

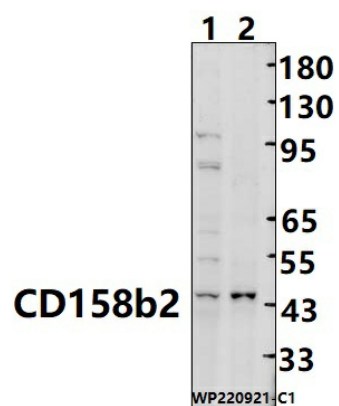
Product data:

Product Type:	Primary Antibodies
Applications:	WB
Recommended Dilution:	WB: 1:1000~1:2000
Reactivity:	Human
Host:	Rabbit
Isotype:	IgG
Clonality:	Polyclonal
Immunogen:	Recombinant protein of human CD158b2.
Specificity:	CD158b2 polyclonal antibody detects endogenous levels of CD158b2 protein.
Formulation:	Rabbit IgG, 1mg/ml in PBS with 0.02% sodium azide, 50% glycerol, pH7.2.
Concentration:	1mg/ml
Conjugation:	Unconjugated
Storage:	Store at 4°C short term. Aliquot and store at -20°C long term. Avoid freeze-thaw cycles.
Stability:	1 year
Predicted Protein Size:	~45 kDa
Gene Name:	killer cell immunoglobulin like receptor, two Ig domains and long cytoplasmic tail 3
Database Link:	Entrez Gene 3804 Human P43628
Background:	Receptor on natural killer (NK) cells for HLA-C alleles (HLA-Cw1, HLA-Cw3 and HLA-Cw7). Inhibits the activity of NK cells thus preventing cell lysis.
Synonyms:	CD158 antigen-like family member B2; CD158b2; Killer cell immunoglobulin-like receptor 2DL3; Killer inhibitory receptor cl 2-3; KIR-023GB; Natural killer-associated transcript 2; NKAT-2; NKAT2a; NKAT2b; p58 natural killer cell receptor clone CL-6; p58 NK receptor CL-6; p58.2 MHC class-I-specific NK receptor
Note:	For research use only, not for use in diagnostic procedure.



[View online »](#)

Product images:



Western blot (WB) analysis of CD158b2 polyclonal antibody at 1:1000 dilution Lane1:MCF-7 cell membrane lysate(25ug) Lane2:A549 cell membrane lysate(25ug)