

## Product datasheet for **TA392468**

### **KIR2DL3 Rabbit Polyclonal Antibody**

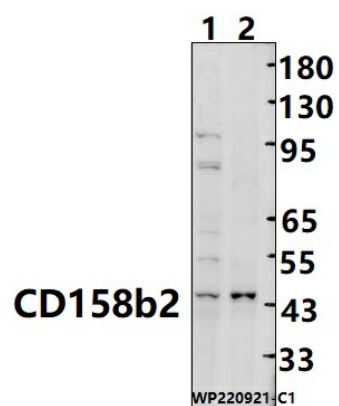
#### **Product data:**

<b>Product Type:</b>	Primary Antibodies
<b>Applications:</b>	WB
<b>Recommended Dilution:</b>	WB: 1:1000~1:2000
<b>Reactivity:</b>	Human
<b>Host:</b>	Rabbit
<b>Isotype:</b>	IgG
<b>Clonality:</b>	Polyclonal
<b>Immunogen:</b>	Recombinant protein of human CD158b2.
<b>Specificity:</b>	CD158b2 polyclonal antibody detects endogenous levels of CD158b2 protein.
<b>Formulation:</b>	Rabbit IgG, 1mg/ml in PBS with 0.02% sodium azide, 50% glycerol, pH7.2.
<b>Concentration:</b>	1mg/ml
<b>Conjugation:</b>	Unconjugated
<b>Storage:</b>	Store at 4°C short term. Aliquot and store at -20°C long term. Avoid freeze-thaw cycles.
<b>Stability:</b>	1 year
<b>Predicted Protein Size:</b>	~45 kDa
<b>Gene Name:</b>	killer cell immunoglobulin like receptor, two Ig domains and long cytoplasmic tail 3
<b>Database Link:</b>	<a href="#">Entrez Gene 3804 Human P43628</a>
<b>Background:</b>	Receptor on natural killer (NK) cells for HLA-C alleles (HLA-Cw1, HLA-Cw3 and HLA-Cw7). Inhibits the activity of NK cells thus preventing cell lysis.
<b>Synonyms:</b>	CD158 antigen-like family member B2; CD158b2; Killer cell immunoglobulin-like receptor 2DL3; Killer inhibitory receptor cl 2-3; KIR-023GB; Natural killer-associated transcript 2; NKAT-2; NKAT2a; NKAT2b; p58 natural killer cell receptor clone CL-6; p58 NK receptor CL-6; p58.2 MHC class-I-specific NK receptor
<b>Note:</b>	For research use only, not for use in diagnostic procedure.



[View online »](#)

## Product images:



Western blot (WB) analysis of CD158b2 polyclonal antibody at 1:1000 dilution Lane1:MCF-7 cell membrane lysate(25ug) Lane2:A549 cell membrane lysate(25ug)