

## Product datasheet for **TA392467**

### CD59 Rabbit Polyclonal Antibody

#### Product data:

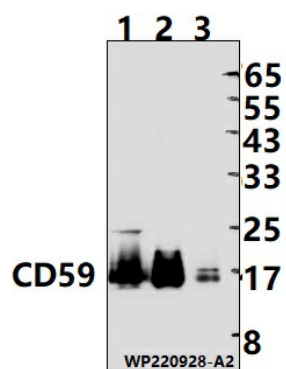
Product Type:	Primary Antibodies
Applications:	WB
Recommended Dilution:	WB: 1:1000~1:2000
Reactivity:	Human
Host:	Rabbit
Isotype:	IgG
Clonality:	Polyclonal
Immunogen:	Recombinant protein of human CD59.
Specificity:	CD59 polyclonal antibody detects endogenous levels of CD59 protein.
Formulation:	Rabbit IgG, 1mg/ml in PBS with 0.02% sodium azide, 50% glycerol, pH7.2.
Concentration:	1mg/ml
Conjugation:	Unconjugated
Storage:	Store at 4°C short term. Aliquot and store at -20°C long term. Avoid freeze-thaw cycles.
Stability:	1 year
Predicted Protein Size:	~17 kDa
Gene Name:	CD59 molecule
Database Link:	<a href="#">Entrez Gene 966 Human P13987</a>
Background:	Potent inhibitor of the complement membrane attack complex (MAC) action. Acts by binding to the C8 and/or C9 complements of the assembling MAC, thereby preventing incorporation of the multiple copies of C9 required for complete formation of the osmolytic pore. This inhibitor appears to be species-specific. Involved in signal transduction for T-cell activation complexed to a protein tyrosine kinase. The soluble form from urine retains its specific complement binding activity, but exhibits greatly reduced ability to inhibit MAC assembly on cell membranes.
Synonyms:	1F5 antigen; 20 kDa homologous restriction factor; CD59; CD59 glycoprotein; HRF-20; HRF20; MAC-inhibitory protein; MAC-IP; MACIF; MEM43 antigen; Membrane attack complex inhibition factor; Membrane inhibitor of reactive lysis; MIRL; Protectin



[View online »](#)

Note: For research use only, not for use in diagnostic procedure.

### Product images:



Western blot (WB) analysis of CD59 polyclonal antibody at 1:1000 dilution Lane1:MCF-7 cell membrane lysate(25ug) Lane2:A549 cell membrane lysate(25ug) Lane3:L02 cell membrane lysate(25ug)