

## Product datasheet for **TA392466**

### **B7H3 (CD276) Rabbit Polyclonal Antibody**

#### **Product data:**

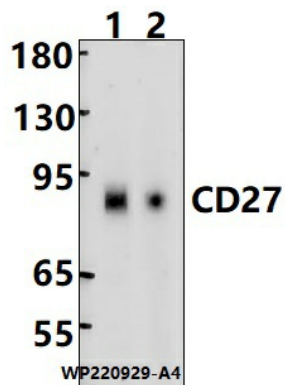
Product Type:	Primary Antibodies
Applications:	WB
Recommended Dilution:	WB: 1:2000~1:5000
Reactivity:	Human
Host:	Rabbit
Isotype:	IgG
Clonality:	Polyclonal
Immunogen:	Recombinant protein of human CD27.
Specificity:	CD27 polyclonal antibody detects endogenous levels of CD27 protein.
Formulation:	Rabbit IgG, 1mg/ml in PBS with 0.02% sodium azide, 50% glycerol, pH7.2.
Concentration:	1mg/ml
Conjugation:	Unconjugated
Storage:	Store at 4°C short term. Aliquot and store at -20°C long term. Avoid freeze-thaw cycles.
Stability:	1 year
Predicted Protein Size:	~90 kDa
Gene Name:	CD276 molecule
Database Link:	<a href="#">Entrez Gene 80381 Human Q5ZPR3</a>
Background:	May participate in the regulation of T-cell-mediated immune response. May play a protective role in tumor cells by inhibiting natural-killer mediated cell lysis as well as a role of marker for detection of neuroblastoma cells. May be involved in the development of acute and chronic transplant rejection and in the regulation of lymphocytic activity at mucosal surfaces. Could also play a key role in providing the placenta and fetus with a suitable immunological environment throughout pregnancy. Both isoform 1 and isoform 2 appear to be redundant in their ability to modulate CD4 T-cell responses. Isoform 2 is shown to enhance the induction of cytotoxic T-cells and selectively stimulates interferon gamma production in the presence of T-cell receptor signaling.
Synonyms:	4Ig-B7-H3; B7 homolog 3; B7-H3; CD276; CD276 antigen; Costimulatory molecule



[View online »](#)

Note: For research use only, not for use in diagnostic procedure.

### Product images:



Western blot (WB) analysis of CD27 polyclonal antibody at 1:2000 dilution Lane1:A549 cell membrane lysate(25ug) Lane2:A375 cell membrane lysate(25ug)