

Product datasheet for **TA392465M**

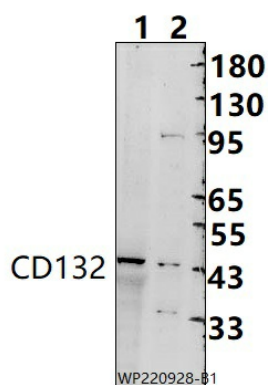
IL2 Receptor gamma (IL2RG) Rabbit Polyclonal Antibody

Product data:

Product Type:	Primary Antibodies
Applications:	WB
Recommended Dilution:	WB: 1:1000~1:2000
Reactivity:	Human
Host:	Rabbit
Isotype:	IgG
Clonality:	Polyclonal
Immunogen:	Recombinant protein of human CD132.
Specificity:	CD132 polyclonal antibody detects endogenous levels of CD132 protein.
Formulation:	Rabbit IgG, 1mg/ml in PBS with 0.02% sodium azide, 50% glycerol, pH7.2.
Concentration:	1mg/ml
Conjugation:	Unconjugated
Storage:	Store at 4°C short term. Aliquot and store at -20°C long term. Avoid freeze-thaw cycles.
Stability:	1 year
Predicted Protein Size:	~45 kDa
Gene Name:	interleukin 2 receptor subunit gamma
Database Link:	Entrez Gene 3561 Human P31785
Background:	Common subunit for the receptors for a variety of interleukins. Probably in association with IL15RA, involved in the stimulation of neutrophil phagocytosis by IL15 .
Synonyms:	CD132; Cytokine receptor common subunit gamma; gammaC; IL-2 receptor subunit gamma; IL-2RG; IL-2R subunit gamma; Interleukin-2 receptor subunit gamma; p64
Note:	For research use only, not for use in diagnostic procedure.

[View online »](#)

Product images:



Western blot (WB) analysis of CD132 polyclonal antibody at 1:1000 dilution Lane1:MCF-7 cell membrane lysate(25ug) Lane2:L02 cell membrane lysate(25ug)