

Product datasheet for **TA392464S**

CD14 Rabbit Polyclonal Antibody

Product data:

Product Type:	Primary Antibodies
Applications:	WB
Recommended Dilution:	WB: 1:5000~1:10000
Reactivity:	Human
Host:	Rabbit
Isotype:	IgG
Clonality:	Polyclonal
Immunogen:	Recombinant protein of human CD14.
Specificity:	CD14 polyclonal antibody detects endogenous levels of CD14 protein.
Formulation:	Rabbit IgG, 1mg/ml in PBS with 0.02% sodium azide, 50% glycerol, pH7.2.
Concentration:	1mg/ml
Conjugation:	Unconjugated
Storage:	Store at 4°C short term. Aliquot and store at -20°C long term. Avoid freeze-thaw cycles.
Stability:	1 year
Predicted Protein Size:	~45 kDa
Gene Name:	CD14 molecule
Database Link:	Entrez Gene 929 Human P08571
Background:	Coreceptor for bacterial lipopolysaccharide. In concert with LBP, binds to monomeric lipopolysaccharide and delivers it to the LY96/TLR4 complex, thereby mediating the innate immune response to bacterial lipopolysaccharide (LPS). Acts via MyD88, TIRAP and TRAF6, leading to NF-kappa-B activation, cytokine secretion and the inflammatory response. Acts as a coreceptor for TLR2:TLR6 heterodimer in response to diacylated lipopeptides and for TLR2:TLR1 heterodimer in response to triacylated lipopeptides, these clusters trigger signaling from the cell surface and subsequently are targeted to the Golgi in a lipid-raft dependent pathway. Binds electronegative LDL (LDL-) and mediates the cytokine release induced by LDL-.

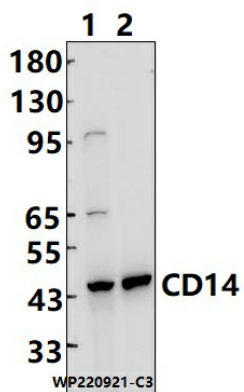


[View online »](#)

Synonyms: CD14; Monocyte differentiation antigen CD14; Monocyte differentiation antigen CD14, membrane-bound form; Monocyte differentiation antigen CD14, urinary form; Myeloid cell-specific leucine-rich glycoprotein

Note: For research use only, not for use in diagnostic procedure.

Product images:



Western blot (WB) analysis of CD14 polyclonal antibody at 1:5000 dilution Lane1:MCF-7 cell membrane lysate(25ug) Lane2:A549 cell membrane lysate(25ug)