

Product datasheet for **TA392463M**

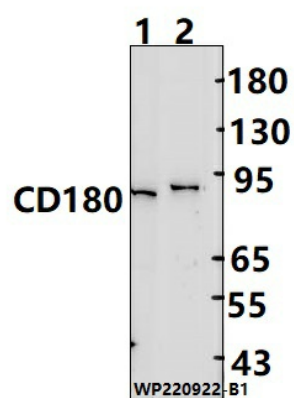
RP105 (CD180) Rabbit Polyclonal Antibody

Product data:

| | |
|-------------------------|---|
| Product Type: | Primary Antibodies |
| Applications: | WB |
| Recommended Dilution: | WB: 1:1000~1:2000 |
| Reactivity: | Human |
| Host: | Rabbit |
| Isotype: | IgG |
| Clonality: | Polyclonal |
| Immunogen: | Recombinant protein of human CD180. |
| Specificity: | CD180 polyclonal antibody detects endogenous levels of CD180 protein. |
| Formulation: | Rabbit IgG, 1mg/ml in PBS with 0.02% sodium azide, 50% glycerol, pH7.2. |
| Concentration: | 1mg/ml |
| Conjugation: | Unconjugated |
| Storage: | Store at 4°C short term. Aliquot and store at -20°C long term. Avoid freeze-thaw cycles. |
| Stability: | 1 year |
| Predicted Protein Size: | ~90 kDa |
| Gene Name: | CD180 molecule |
| Database Link: | Entrez Gene 4064 Human Q99467 |
| Background: | May cooperate with MD-1 and TLR4 to mediate the innate immune response to bacterial lipopolysaccharide (LPS) in B-cells. Leads to NF-kappa-B activation. Also involved in the life/death decision of B-cells (By similarity). By similarity |
| Synonyms: | CD180; CD180 antigen; Lymphocyte antigen 64; Radioprotective 105 kDa protein |
| Note: | For research use only, not for use in diagnostic procedure. |


[View online »](#)

Product images:



Western blot (WB) analysis of CD180 polyclonal antibody at 1:1000 dilution Lane1:A549 cell membrane lysate(25ug) Lane2:EC9706 cell membrane lysate(25ug)