

Product datasheet for **TA392462S**

CD146 (MCAM) Rabbit Polyclonal Antibody

Product data:

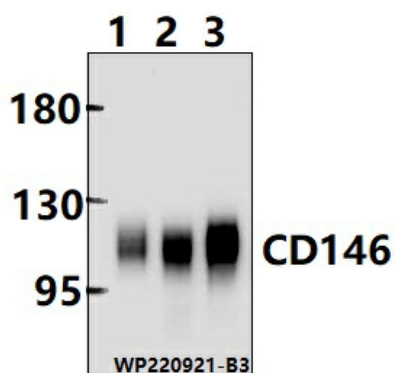
Product Type:	Primary Antibodies
Applications:	WB
Recommended Dilution:	WB: 1:2000~1:5000
Reactivity:	Human
Host:	Rabbit
Isotype:	IgG
Clonality:	Polyclonal
Immunogen:	Recombinant protein of human CD146.
Specificity:	CD146 polyclonal antibody detects endogenous levels of CD146 protein.
Formulation:	Rabbit IgG, 1mg/ml in PBS with 0.02% sodium azide, 50% glycerol, pH7.2.
Concentration:	1mg/ml
Conjugation:	Unconjugated
Storage:	Store at 4°C short term. Aliquot and store at -20°C long term. Avoid freeze-thaw cycles.
Stability:	1 year
Predicted Protein Size:	~110 kDa
Gene Name:	melanoma cell adhesion molecule
Database Link:	Entrez Gene 4162 Human P43121
Background:	Plays a role in cell adhesion, and in cohesion of the endothelial monolayer at intercellular junctions in vascular tissue. Its expression may allow melanoma cells to interact with cellular elements of the vascular system, thereby enhancing hematogeneous tumor spread. Could be an adhesion molecule active in neural crest cells during embryonic development. Acts as surface receptor that triggers tyrosine phosphorylation of FYN and PTK2/FAK1, and a transient increase in the intracellular calcium concentration.
Synonyms:	CD146; Cell surface glycoprotein MUC18; Cell surface glycoprotein P1H12; Melanoma-associated antigen A32; Melanoma-associated antigen MUC18; Melanoma cell adhesion molecule; S-endo 1 endothelial-associated antigen



[View online »](#)

Note: For research use only, not for use in diagnostic procedure.

Product images:



Western blot (WB) analysis of CD146 polyclonal antibody at 1:2000 dilution Lane1:L02 cell membrane lysate(20ug) Lane2:A549 cell membrane lysate(20ug) Lane3:MCF-7 cell membrane lysate(20ug)