

## Product datasheet for **TA392461M**

### IL5RA Rabbit Polyclonal Antibody

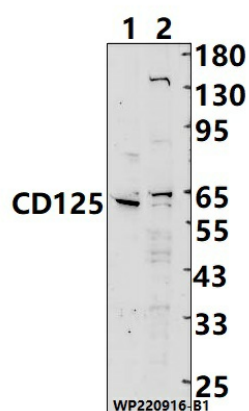
#### Product data:

Product Type:	Primary Antibodies
Applications:	WB
Recommended Dilution:	WB: 1:2000~1:5000
Reactivity:	Human, Mouse
Host:	Rabbit
Isotype:	IgG
Clonality:	Polyclonal
Immunogen:	Recombinant protein of human CD125.
Specificity:	CD125 polyclonal antibody detects endogenous levels of CD125 protein.
Formulation:	Rabbit IgG, 1mg/ml in PBS with 0.02% sodium azide, 50% glycerol, pH7.2.
Concentration:	1mg/ml
Conjugation:	Unconjugated
Storage:	Store at 4°C short term. Aliquot and store at -20°C long term. Avoid freeze-thaw cycles.
Stability:	1 year
Predicted Protein Size:	~ 60 kDa
Gene Name:	interleukin 5 receptor subunit alpha
Database Link:	<a href="#">Entrez Gene 3568 Human Q01344</a>
Background:	Cell surface receptor that plays an important role in the survival, differentiation, and chemotaxis of eosinophils .Acts by forming an heterodimeric receptor with CSF2RB subunit and subsequently binding to interleukin-5.In unstimulated conditions, interacts constitutively with JAK2. Heterodimeric receptor activation leads to JAK2 stimulation and subsequent activation of the JAK-STAT pathway .
Synonyms:	CD125; CDw125; IL-5 receptor subunit alpha; IL-5R-alpha; IL-5RA; IL-5R subunit alpha; Interleukin-5 receptor subunit alpha
Note:	For research use only, not for use in diagnostic procedure.



[View online »](#)

## Product images:



Western blot (WB) analysis of CD125 polyclonal antibody at 1:2000 dilution Lane1:EC9706 cell membrane lysate(25ug) Lane2:MCF-7 cell membrane lysate(25ug)