

## Product datasheet for **TA392461**

### IL5RA Rabbit Polyclonal Antibody

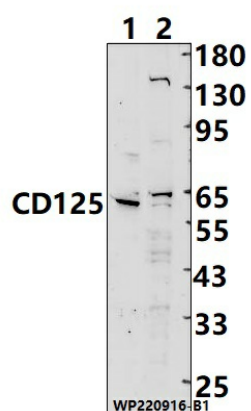
#### Product data:

|                         |   |
|-------------------------|---|
| Product Type:           | Primary Antibodies  |
| Applications:           | WB  |
| Recommended Dilution:   | WB: 1:2000~1:5000   |
| Reactivity:             | Human, Mouse  |
| Host:                   | Rabbit  |
| Isotype:                | IgG   |
| Clonality:              | Polyclonal  |
| Immunogen:              | Recombinant protein of human CD125.   |
| Specificity:            | CD125 polyclonal antibody detects endogenous levels of CD125 protein.   |
| Formulation:            | Rabbit IgG, 1mg/ml in PBS with 0.02% sodium azide, 50% glycerol, pH7.2.   |
| Concentration:          | 1mg/ml  |
| Conjugation:            | Unconjugated  |
| Storage:                | Store at 4°C short term. Aliquot and store at -20°C long term. Avoid freeze-thaw cycles.  |
| Stability:              | 1 year  |
| Predicted Protein Size: | ~ 60 kDa  |
| Gene Name:              | interleukin 5 receptor subunit alpha  |
| Database Link:          | <a href="#">Entrez Gene 3568 Human Q01344</a>   |
| Background:             | Cell surface receptor that plays an important role in the survival, differentiation, and chemotaxis of eosinophils .Acts by forming an heterodimeric receptor with CSF2RB subunit and subsequently binding to interleukin-5.In unstimulated conditions, interacts constitutively with JAK2. Heterodimeric receptor activation leads to JAK2 stimulation and subsequent activation of the JAK-STAT pathway . |
| Synonyms:               | CD125; CDw125; IL-5 receptor subunit alpha; IL-5R-alpha; IL-5RA; IL-5R subunit alpha; Interleukin-5 receptor subunit alpha  |
| Note:                   | For research use only, not for use in diagnostic procedure.   |



[View online »](#)

## Product images:



Western blot (WB) analysis of CD125 polyclonal antibody at 1:2000 dilution Lane1:EC9706 cell membrane lysate(25ug) Lane2:MCF-7 cell membrane lysate(25ug)