

## Product datasheet for **TA392460M**

### Nectin 2 (NECTIN2) Rabbit Polyclonal Antibody

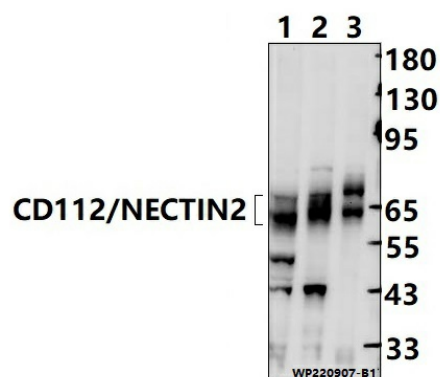
#### Product data:

Product Type:	Primary Antibodies
Applications:	WB
Recommended Dilution:	WB: 1:2000~1:5000
Reactivity:	Human, Mouse
Host:	Rabbit
Isotype:	IgG
Clonality:	Polyclonal
Immunogen:	Recombinant protein of human CD112/NECTIN2.
Specificity:	CD112/NECTIN2 polyclonal antibody detects endogenous levels of CD112/NECTIN2 protein.
Formulation:	Rabbit IgG, 1mg/ml in PBS with 0.02% sodium azide, 50% glycerol, pH7.2.
Concentration:	1mg/ml
Conjugation:	Unconjugated
Storage:	Store at 4°C short term. Aliquot and store at -20°C long term. Avoid freeze-thaw cycles.
Stability:	1 year
Predicted Protein Size:	~ 60-70 kDa
Gene Name:	nectin cell adhesion molecule 2
Database Link:	<a href="#">Entrez Gene 5819 Human Q92692</a>
Background:	Modulator of T-cell signaling. Can be either a costimulator of T-cell function, or a coinhibitor, depending on the receptor it binds to. Upon binding to CD226, stimulates T-cell proliferation and cytokine production, including that of IL2, IL5, IL10, IL13, and IFNG. Upon interaction with PVRIG, inhibits T-cell proliferation. These interactions are competitive .Probable cell adhesion protein .
Synonyms:	CD112; Herpes virus entry mediator B; Herpesvirus entry mediator B; HveB; Nectin-2; Nectin cell adhesion molecule 2; Poliovirus receptor-related protein 2
Note:	For research use only, not for use in diagnostic procedure.



[View online »](#)

## Product images:



Western blot (WB) analysis of CD112/NECTIN2 polyclonal antibody at 1:2000 dilution Lane1:CT-26 whole cell lysate(30ug) Lane2:H1792 whole cell lysate(20ug) Lane3:HEK293T whole cell lysate(20ug)