

## Product datasheet for **TA392459**

### GM CSF Receptor alpha (CSF2RA) Rabbit Polyclonal Antibody

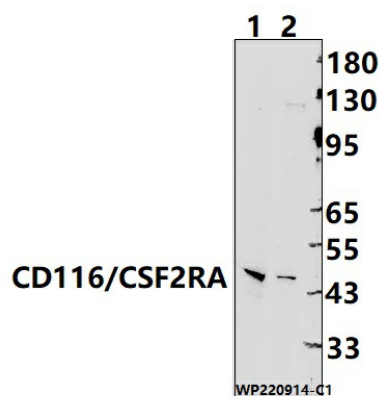
#### Product data:

Product Type:	Primary Antibodies
Applications:	WB
Recommended Dilution:	WB: 1:2000~1:5000
Reactivity:	Human
Host:	Rabbit
Isotype:	IgG
Clonality:	Polyclonal
Immunogen:	Recombinant protein of human CD116/CSF2RA.
Specificity:	CD116/CSF2RA polyclonal antibody detects endogenous levels of CD116/CSF2RA protein.
Formulation:	Rabbit IgG, 1mg/ml in PBS with 0.02% sodium azide, 50% glycerol, pH7.2.
Concentration:	1mg/ml
Conjugation:	Unconjugated
Storage:	Store at 4°C short term. Aliquot and store at -20°C long term. Avoid freeze-thaw cycles.
Stability:	1 year
Predicted Protein Size:	~ 46 kDa
Gene Name:	colony stimulating factor 2 receptor alpha subunit
Database Link:	<a href="#">Entrez Gene 1438 Human P15509</a>
Background:	Low affinity receptor for granulocyte-macrophage colony-stimulating factor. Transduces a signal that results in the proliferation, differentiation, and functional activation of hematopoietic cells.
Synonyms:	CD116; CDw116; GM-CSF-R-alpha; GMCSFR-alpha; GMR-alpha; Granulocyte-macrophage colony-stimulating factor receptor subunit alpha
Note:	For research use only, not for use in diagnostic procedure.



[View online »](#)

## Product images:



Western blot (WB) analysis of  
CD116/CSF2RA polyclonal antibody at 1:2000  
dilution Lane1:MCF-7 cell membrane lysate(25ug)  
Lane2:LO2 cell membrane lysate(25ug)