

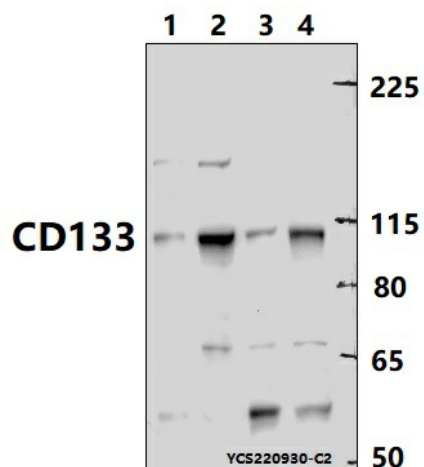
Product datasheet for TA392458M

CD133 (PROM1) Rabbit Polyclonal Antibody

Product data:

Product Type:	Primary Antibodies
Applications:	WB
Recommended Dilution:	WB: 1:1000~1:2000
Reactivity:	Human
Host:	Rabbit
Isotype:	IgG
Clonality:	Polyclonal
Immunogen:	Recombinant protein of human CD133.
Specificity:	CD133 polyclonal antibody detects endogenous levels of CD133 protein.
Formulation:	Rabbit IgG, 1mg/ml in PBS with 0.02% sodium azide, 50% glycerol, pH7.2.
Concentration:	1mg/ml
Conjugation:	Unconjugated
Storage:	Store at 4°C short term. Aliquot and store at -20°C long term. Avoid freeze-thaw cycles.
Stability:	1 year
Predicted Protein Size:	~ 110 kDa
Gene Name:	prominin 1
Database Link:	Entrez Gene 8842 Human O43490
Background:	CD133, also known as Prominin, was first described as a cell surface marker recognized by monoclonal antibody AC133 on putative hematopoietic stem cells. Subsequent cDNA cloning indicated that CD133 is a five-transmembrane protein with a predicted molecular weight of 97 kDa. Due to heavy glycosylation, its apparent molecular weight is 130 kDa as determined by SDS-PAGE analysis. Besides blood stem cells, CD133 is expressed on and used to isolate other stem cells, including cancer stem cells. A deletion mutation in CD133 produces aberrant protein localization and may result in retinal degeneration in humans.
Synonyms:	Antigen AC133; CD133; MSTP061; PROM1; Prominin-1; Prominin-like protein 1; PROML1
Note:	For research use only, not for use in diagnostic procedure.


[View online »](#)

Product images:


Western blot (WB) analysis of CD133 polyclonal antibody at 1:1000 dilution Lane1:L02 whole cell lysate(30ug) Lane2:HepG2 whole cell lysate(30ug) Lane3:Panc1 whole cell lysate(30ug) Lane4:H1792 whole cell lysate(30ug)