

## Product datasheet for **TA392457M**

### **IL3RB (CSF2RB) Rabbit Polyclonal Antibody**

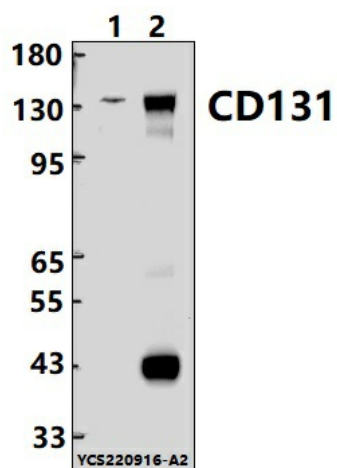
#### **Product data:**

Product Type:	Primary Antibodies
Applications:	WB
Recommended Dilution:	WB: 1:1000~1:2000
Reactivity:	Human, Mouse
Host:	Rabbit
Isotype:	IgG
Clonality:	Polyclonal
Immunogen:	Recombinant protein of human CD131.
Specificity:	CD131 polyclonal antibody detects endogenous levels of CD131 protein.
Formulation:	Rabbit IgG, 1mg/ml in PBS with 0.02% sodium azide, 50% glycerol, pH7.2.
Concentration:	1mg/ml
Conjugation:	Unconjugated
Storage:	Store at 4°C short term. Aliquot and store at -20°C long term. Avoid freeze-thaw cycles.
Stability:	1 year
Predicted Protein Size:	~ 130 kDa
Gene Name:	colony stimulating factor 2 receptor beta common subunit
Database Link:	<a href="#">Entrez Gene 1439 Human P32927</a>
Background:	The common beta-chain (beta-c) of the granulocyte macrophage colony-stimulating factor (GM-CSF), interleukin-3 (IL-3) and IL-5 receptors is the major signaling subunit of these receptors, coupling ligand binding to multiple biological activities. Tyrosine phosphorylation of cytokine receptor common beta-chain is one of the first events in GM-CSF, IL-3 and IL-5 receptor activation and in signaling initiation. Serine phosphorylation within the 14-3-3 binding sequence of the common beta-chain is also involved in GM-CSF, IL-3 and IL-5 receptor-specific functions.
Synonyms:	CD131; CDw131; CSF2RB; Cytokine receptor common subunit beta; GM-CSF/IL-3/IL-5 receptor common beta subunit; IL3RB; IL5RB


[View online »](#)

**Note:** For research use only, not for use in diagnostic procedure.

**Product images:**



Western blot (WB) analysis of CD131 polyclonal antibody at 1:1000 dilution Lane1:Jurkat whole cell lysate(30ug) Lane2:The Liver tissue lysate of Mouse(30ug)