

Product datasheet for **TA392457**

IL3RB (CSF2RB) Rabbit Polyclonal Antibody

Product data:

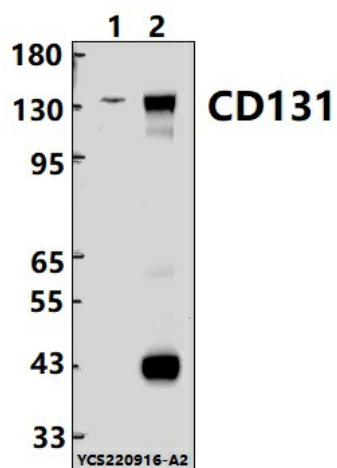
| | |
|-------------------------|---|
| Product Type: | Primary Antibodies |
| Applications: | WB |
| Recommended Dilution: | WB: 1:1000~1:2000 |
| Reactivity: | Human, Mouse |
| Host: | Rabbit |
| Isotype: | IgG |
| Clonality: | Polyclonal |
| Immunogen: | Recombinant protein of human CD131. |
| Specificity: | CD131 polyclonal antibody detects endogenous levels of CD131 protein. |
| Formulation: | Rabbit IgG, 1mg/ml in PBS with 0.02% sodium azide, 50% glycerol, pH7.2. |
| Concentration: | 1mg/ml |
| Conjugation: | Unconjugated |
| Storage: | Store at 4°C short term. Aliquot and store at -20°C long term. Avoid freeze-thaw cycles. |
| Stability: | 1 year |
| Predicted Protein Size: | ~ 130 kDa |
| Gene Name: | colony stimulating factor 2 receptor beta common subunit |
| Database Link: | Entrez Gene 1439 Human P32927 |
| Background: | The common beta-chain (beta-c) of the granulocyte macrophage colony-stimulating factor (GM-CSF), interleukin-3 (IL-3) and IL-5 receptors is the major signaling subunit of these receptors, coupling ligand binding to multiple biological activities. Tyrosine phosphorylation of cytokine receptor common beta-chain is one of the first events in GM-CSF, IL-3 and IL-5 receptor activation and in signaling initiation. Serine phosphorylation within the 14-3-3 binding sequence of the common beta-chain is also involved in GM-CSF, IL-3 and IL-5 receptor-specific functions. |
| Synonyms: | CD131; CDw131; CSF2RB; Cytokine receptor common subunit beta; GM-CSF/IL-3/IL-5 receptor common beta subunit; IL3RB; IL5RB |



[View online »](#)

Note: For research use only, not for use in diagnostic procedure.

Product images:



Western blot (WB) analysis of CD131 polyclonal antibody at 1:1000 dilution Lane1: Jurkat whole cell lysate(30ug) Lane2: The Liver tissue lysate of Mouse(30ug)