

Product datasheet for **TA392456S**

CD1B Rabbit Polyclonal Antibody

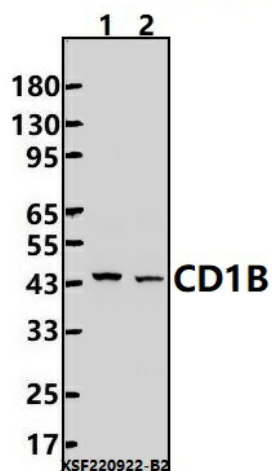
Product data:

Product Type:	Primary Antibodies
Applications:	WB
Recommended Dilution:	WB: 1:2000~1:5000
Reactivity:	Human
Host:	Rabbit
Isotype:	IgG
Clonality:	Polyclonal
Immunogen:	Recombinant protein of human CD1B.
Specificity:	CD1B polyclonal antibody detects endogenous levels of CD1B protein.
Formulation:	Rabbit IgG, 1mg/ml in PBS with 0.02% sodium azide, 50% glycerol, pH7.2.
Concentration:	1mg/ml
Conjugation:	Unconjugated
Storage:	Store at 4°C short term. Aliquot and store at -20°C long term. Avoid freeze-thaw cycles.
Stability:	1 year
Predicted Protein Size:	~ 44 kDa
Gene Name:	CD1b molecule
Database Link:	Entrez Gene 910 Human P29016
Background:	Antigen-presenting protein that binds self and non-self lipid and glycolipid antigens and presents them to T-cell receptors on natural killer T-cells.
Synonyms:	CD1B; CD1b; T-cell surface glycoprotein CD1b
Note:	For research use only, not for use in diagnostic procedure.



[View online »](#)

Product images:



Western blot (WB) analysis of CD1B polyclonal antibody at 1:2000 dilution Lane1:A549 cell membrane lysate(24ug) Lane2:SGC7901 cell membrane lysate(24ug)