

Product datasheet for **TA392456**

CD1B Rabbit Polyclonal Antibody

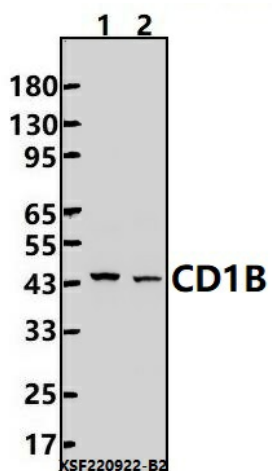
Product data:

| | |
|-------------------------|--|
| Product Type: | Primary Antibodies |
| Applications: | WB |
| Recommended Dilution: | WB: 1:2000~1:5000 |
| Reactivity: | Human |
| Host: | Rabbit |
| Isotype: | IgG |
| Clonality: | Polyclonal |
| Immunogen: | Recombinant protein of human CD1B. |
| Specificity: | CD1B polyclonal antibody detects endogenous levels of CD1B protein. |
| Formulation: | Rabbit IgG, 1mg/ml in PBS with 0.02% sodium azide, 50% glycerol, pH7.2. |
| Concentration: | 1mg/ml |
| Conjugation: | Unconjugated |
| Storage: | Store at 4°C short term. Aliquot and store at -20°C long term. Avoid freeze-thaw cycles. |
| Stability: | 1 year |
| Predicted Protein Size: | ~ 44 kDa |
| Gene Name: | CD1b molecule |
| Database Link: | Entrez Gene 910 Human P29016 |
| Background: | Antigen-presenting protein that binds self and non-self lipid and glycolipid antigens and presents them to T-cell receptors on natural killer T-cells. |
| Synonyms: | CD1B; CD1b; T-cell surface glycoprotein CD1b |
| Note: | For research use only, not for use in diagnostic procedure. |



[View online »](#)

Product images:



Western blot (WB) analysis of CD1B polyclonal antibody at 1:2000 dilution Lane1:A549 cell membrane lysate(24ug) Lane2:SGC7901 cell membrane lysate(24ug)