

Product datasheet for **TA392454**

CD1C Rabbit Polyclonal Antibody

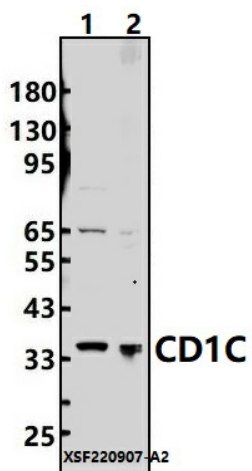
Product data:

Product Type:	Primary Antibodies
Applications:	WB
Recommended Dilution:	WB: 1:1000~1:2000
Reactivity:	Human, Rat
Host:	Rabbit
Isotype:	IgG
Clonality:	Polyclonal
Immunogen:	Recombinant protein of human CD1C.
Specificity:	CD1C polyclonal antibody detects endogenous levels of CD1C protein.
Formulation:	Rabbit IgG, 1mg/ml in PBS with 0.02% sodium azide, 50% glycerol, pH7.2.
Concentration:	1mg/ml
Conjugation:	Unconjugated
Storage:	Store at 4°C short term. Aliquot and store at -20°C long term. Avoid freeze-thaw cycles.
Stability:	1 year
Predicted Protein Size:	~ 36 kDa
Gene Name:	CD1c molecule
Database Link:	Entrez Gene 911 Human P29017
Background:	Antigen-presenting protein that binds self and non-self lipid and glycolipid antigens and presents them to T-cell receptors on natural killer T-cells.
Synonyms:	CD1C; CD1c; T-cell surface glycoprotein CD1c
Note:	For research use only, not for use in diagnostic procedure.



[View online »](#)

Product images:



Western blot (WB) analysis of CD1C polyclonal antibody at 1:1000 dilution Lane1:MCF-7 cell membrane lysate(24ug) Lane2:C6 cell membrane lysate(24ug)