

## Product datasheet for **TA392452**

### FCAMR Rabbit Polyclonal Antibody

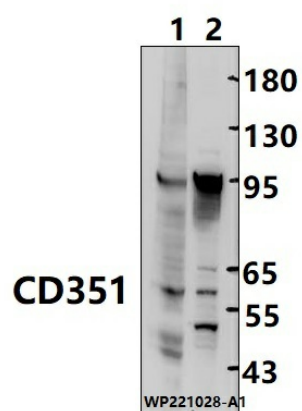
#### Product data:

|                         |   |
|-------------------------|---|
| Product Type:           | Primary Antibodies  |
| Applications:           | WB  |
| Recommended Dilution:   | WB: 1:5000~1:10000  |
| Reactivity:             | Human, Mouse  |
| Host:                   | Rabbit  |
| Isotype:                | IgG   |
| Clonality:              | Polyclonal  |
| Immunogen:              | Recombinant protein of human CD351.   |
| Specificity:            | CD351 polyclonal antibody detects endogenous levels of CD351 protein.   |
| Formulation:            | Rabbit IgG, 1mg/ml in PBS with 0.02% sodium azide, 50% glycerol, pH7.2.   |
| Concentration:          | 1mg/ml  |
| Conjugation:            | Unconjugated  |
| Storage:                | Store at 4°C short term. Aliquot and store at -20°C long term. Avoid freeze-thaw cycles.  |
| Stability:              | 1 year  |
| Predicted Protein Size: | ~60 kDa   |
| Gene Name:              | Fc fragment of IgA and IgM receptor   |
| Database Link:          | <a href="#">Entrez Gene 83953 Human Q8WWV6</a>  |
| Background:             | Functions as a receptor for the Fc fragment of IgA and IgM. Binds IgA and IgM with high affinity and mediates their endocytosis. May function in the immune response to microbes mediated by IgA and IgM. |
| Synonyms:               | CD351; Fc alpha/mu receptor; High affinity immunoglobulin alpha and immunoglobulin mu Fc receptor   |
| Note:                   | For research use only, not for use in diagnostic procedure.   |



[View online »](#)

## Product images:



Western blot (WB) analysis of CD351 polyclonal antibody at 1:5000 dilution Lane1:CT-26 whole cell lysate(25ug) Lane2:MCF-7 cell membrane lysate(30ug)