

## Product datasheet for **TA392449S**

### Syndecan 2 (SDC2) Rabbit Polyclonal Antibody

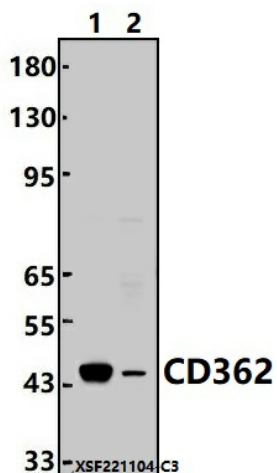
#### Product data:

Product Type:	Primary Antibodies
Applications:	WB
Recommended Dilution:	WB: 1:1000~1:2000
Reactivity:	Human
Host:	Rabbit
Isotype:	IgG
Clonality:	Polyclonal
Immunogen:	Recombinant protein of human CD362.
Specificity:	CD362 polyclonal antibody detects endogenous levels of CD362 protein.
Formulation:	Rabbit IgG, 1mg/ml in PBS with 0.02% sodium azide, 50% glycerol, pH7.2.
Concentration:	1mg/ml
Conjugation:	Unconjugated
Storage:	Store at 4°C short term. Aliquot and store at -20°C long term. Avoid freeze-thaw cycles.
Stability:	1 year
Predicted Protein Size:	~ 44 kDa
Gene Name:	syndecan 2
Database Link:	<a href="#">Entrez Gene 6383 Human P34741</a>
Background:	Cell surface proteoglycan that bears heparan sulfate. Regulates dendritic arbor morphogenesis (By similarity).
Synonyms:	CD362; Fibroglycan; Heparan sulfate proteoglycan core protein; HSPG; HSPG1; SDC2; SYND2; Syndecan-2
Note:	For research use only, not for use in diagnostic procedure.



[View online »](#)

## Product images:



Western blot (WB) analysis of CD362 polyclonal antibody at 1:1000 dilution Lane1:L02 cell membrane lysate(24ug) Lane2:MCF-7 cell membrane lysate(24ug)