

## Product datasheet for **TA392448M**

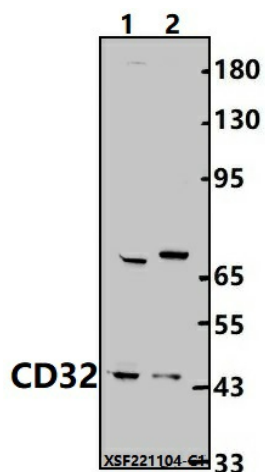
### CD32B (FCGR2B) Rabbit Polyclonal Antibody

#### Product data:

Product Type:	Primary Antibodies
Applications:	WB
Recommended Dilution:	WB: 1:1000~1:2000
Reactivity:	Human
Host:	Rabbit
Isotype:	IgG
Clonality:	Polyclonal
Immunogen:	Recombinant protein of human CD32.
Specificity:	CD32 (FcgammaRIIb) polyclonal antibody detects endogenous levels of CD32 protein.
Formulation:	Rabbit IgG, 1mg/ml in PBS with 0.02% sodium azide, 50% glycerol, pH7.2.
Concentration:	1mg/ml
Conjugation:	Unconjugated
Storage:	Store at 4°C short term. Aliquot and store at -20°C long term. Avoid freeze-thaw cycles.
Stability:	1 year
Predicted Protein Size:	~ 44 kDa
Gene Name:	Fc fragment of IgG receptor IIb
Database Link:	<a href="#">Entrez Gene 2213 Human P31994</a>
Background:	Receptor for the Fc region of complexed or aggregated immunoglobulins gamma. Low affinity receptor. Involved in a variety of effector and regulatory functions such as phagocytosis of immune complexes and modulation of antibody production by B-cells. Binding to this receptor results in down-modulation of previous state of cell activation triggered via antigen receptors on B-cells (BCR), T-cells (TCR) or via another Fc receptor. Isoform IIB1 fails to mediate endocytosis or phagocytosis. Isoform IIB2 does not trigger phagocytosis.
Synonyms:	CD32; CDw32; Fc-gamma-RIIb; Fc-gamma RII-b; FCG2; FCGR2B; FcRII-b; IGFR2; IgG Fc receptor II-b; Low affinity immunoglobulin gamma Fc region receptor II-b
Note:	For research use only, not for use in diagnostic procedure.


[View online »](#)

Product images:



Western blot (WB) analysis of CD32  
(FcγRIIb) polyclonal antibody at 1:1000  
dilution Lane1:SGC7901 whole cell lysate(30ug)  
Lane2:EC9706 cell membrane lysate(24ug)