

Product datasheet for TA392447M

CD37 Rabbit Polyclonal Antibody

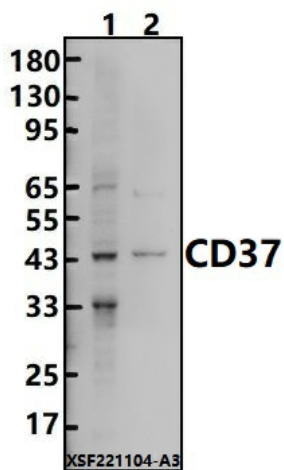
Product data:

| | |
|-------------------------|--|
| Product Type: | Primary Antibodies |
| Applications: | WB |
| Recommended Dilution: | WB: 1:2000~1:5000 |
| Reactivity: | Human |
| Host: | Rabbit |
| Isotype: | IgG |
| Clonality: | Polyclonal |
| Immunogen: | Recombinant protein of human CD37. |
| Specificity: | CD37 polyclonal antibody detects endogenous levels of CD37 protein. |
| Formulation: | Rabbit IgG, 1mg/ml in PBS with 0.02% sodium azide, 50% glycerol, pH7.2. |
| Concentration: | 1mg/ml |
| Conjugation: | Unconjugated |
| Storage: | Store at 4°C short term. Aliquot and store at -20°C long term. Avoid freeze-thaw cycles. |
| Stability: | 1 year |
| Predicted Protein Size: | ~ 43 kDa |
| Gene Name: | CD37 molecule |
| Database Link: | Entrez Gene 951 Human P11049 |
| Background: | CD37 belongs to the tetraspanin family of transmembrane proteins and a high level of expression is restricted largely to normal and as well as malignant B cells. Other immune cell populations such as T cells and monocytes, however, have been shown to express low levels of CD37. While the molecular mechanisms are still not fully resolved, research studies have shown that CD37 becomes tyrosine phosphorylated and facilitates association with intracellular signaling proteins that drive both survival and apoptosis in B cells. Due to its fairly restricted, high level of expression in normal and neoplastic B cells, CD37 has become an attractive immunotherapy target in the context of B cells malignancies. |
| Synonyms: | CD37; Leukocyte antigen CD37; Tetraspanin-26; Tspan-26; TSPAN26 |


[View online »](#)

Note: For research use only, not for use in diagnostic procedure.

Product images:



Western blot (WB) analysis of CD37 polyclonal antibody at 1:2000 dilution Lane1:A549 whole cell lysate(30ug) Lane2:EC9706 cell membrane lysate(24ug)