

## Product datasheet for **TA392446M**

### **EVI2B Rabbit Polyclonal Antibody**

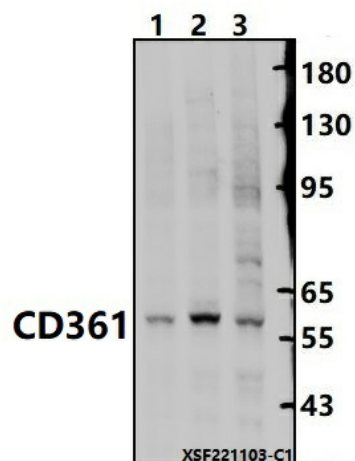
#### **Product data:**

Product Type:	Primary Antibodies
Applications:	WB
Recommended Dilution:	WB: 1:1000~1:2000
Reactivity:	Human, Mouse
Host:	Rabbit
Isotype:	IgG
Clonality:	Polyclonal
Immunogen:	Recombinant protein of human CD361.
Specificity:	CD361 polyclonal antibody detects endogenous levels of CD361 protein.
Formulation:	Rabbit IgG, 1mg/ml in PBS with 0.02% sodium azide, 50% glycerol, pH7.2.
Concentration:	1mg/ml
Conjugation:	Unconjugated
Storage:	Store at 4°C short term. Aliquot and store at -20°C long term. Avoid freeze-thaw cycles.
Stability:	1 year
Predicted Protein Size:	~ 58 kDa
Gene Name:	ecotropic viral integration site 2B
Database Link:	<a href="#">Entrez Gene 2124 Human P34910</a>
Background:	Required for granulocyte differentiation and functionality of hematopoietic progenitor cells through the control of cell cycle progression and survival of hematopoietic progenitor cells.
Synonyms:	CD361; Ecotropic viral integration site 2B protein homolog; EVDB; EVI-2B; EVI2B; Protein EVI2B
Note:	For research use only, not for use in diagnostic procedure.



[View online »](#)

Product images:



Western blot (WB) analysis of CD361 polyclonal antibody at 1:1000 dilution Lane1:HEK293T whole cell lysate(30ug) Lane2:BV2 whole cell lysate(30ug) Lane3:A549 whole cell lysate(30ug)