

Product datasheet for **TA392445M**

SIRPB1 Rabbit Polyclonal Antibody

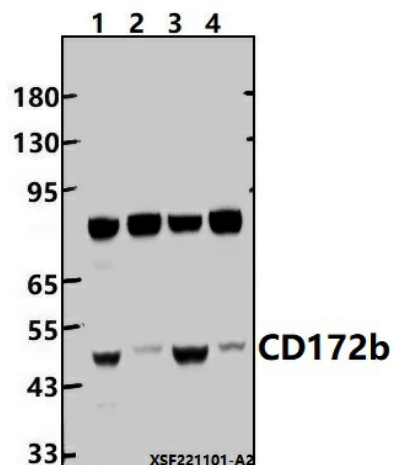
Product data:

Product Type:	Primary Antibodies
Applications:	WB
Recommended Dilution:	WB: 1:1000~1:2000
Reactivity:	Human, Rat, Mouse
Host:	Rabbit
Isotype:	IgG
Clonality:	Polyclonal
Immunogen:	Recombinant protein of human CD172b.
Specificity:	CD172b polyclonal antibody detects endogenous levels of CD172b protein.
Formulation:	Rabbit IgG, 1mg/ml in PBS with 0.02% sodium azide, 50% glycerol, pH7.2.
Concentration:	1mg/ml
Conjugation:	Unconjugated
Storage:	Store at 4°C short term. Aliquot and store at -20°C long term. Avoid freeze-thaw cycles.
Stability:	1 year
Predicted Protein Size:	~ 48 kDa
Gene Name:	signal regulatory protein beta 1
Database Link:	Entrez Gene 10326 Human O00241
Background:	Immunoglobulin-like cell surface receptor involved in the negative regulation of receptor tyrosine kinase-coupled signaling processes. Participates also in the recruitment of tyrosine kinase SYK. Triggers activation of myeloid cells when associated with TYROBP.
Synonyms:	CD172 antigen-like family member B; CD172b; Signal-regulatory protein beta-1; SIRP-beta-1; SIRPB1
Note:	For research use only, not for use in diagnostic procedure.



[View online »](#)

Product images:



Western blot (WB) analysis of CD172b polyclonal antibody at 1:1000 dilution Lane1:A549 whole cell lysate(30ug) Lane2:Hela whole cell lysate(30ug) Lane3:CT-26 whole cell lysate(30ug) Lane4:PC12 whole cell lysate(30ug)