

## Product datasheet for **TA392444M**

### KIR3DL1 Rabbit Polyclonal Antibody

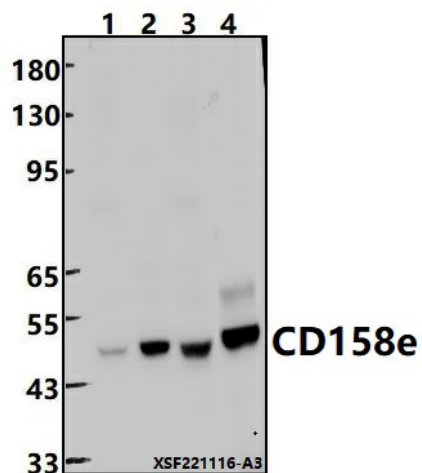
#### Product data:

Product Type:	Primary Antibodies
Applications:	WB
Recommended Dilution:	WB: 1:2000~1:5000
Reactivity:	Human, Rat
Host:	Rabbit
Isotype:	IgG
Clonality:	Polyclonal
Immunogen:	Recombinant protein of human CD158e.
Specificity:	CD158e polyclonal antibody detects endogenous levels of CD158e protein.
Formulation:	Rabbit IgG, 1mg/ml in PBS with 0.02% sodium azide, 50% glycerol, pH7.2.
Concentration:	1mg/ml
Conjugation:	Unconjugated
Storage:	Store at 4°C short term. Aliquot and store at -20°C long term. Avoid freeze-thaw cycles.
Stability:	1 year
Predicted Protein Size:	~ 49 kDa
Gene Name:	killer cell immunoglobulin like receptor, three Ig domains and long cytoplasmic tail 1
Database Link:	<a href="#">Entrez Gene 3811 Human P43629</a>
Background:	Receptor on natural killer (NK) cells for HLA Bw4 allele. Inhibits the activity of NK cells thus preventing cell lysis.
Synonyms:	CD158 antigen-like family member E; CD158E; CD158e; HLA-BW4-specific inhibitory NK cell receptor; Killer cell immunoglobulin-like receptor 3DL1; KIR3DL1; Natural killer-associated transcript 3; NKAT-3; NKAT3; NKB1; p70 natural killer cell receptor clones CL-2/CL-11; p70 NK receptor CL-2/CL-11
Note:	For research use only, not for use in diagnostic procedure.



[View online »](#)

## Product images:



Western blot (WB) analysis of CD158e polyclonal antibody at 1:2000 dilution Lane1:A549 whole cell lysate(30ug) Lane2:L02 cell membrane lysate(24ug) Lane3:HepG2 whole cell lysate(30ug) Lane4:PMVEC whole cell lysate(30ug)