

## Product datasheet for **TA392444**

### **KIR3DL1 Rabbit Polyclonal Antibody**

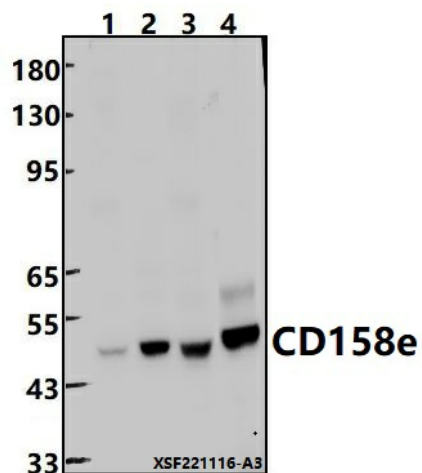
#### **Product data:**

<b>Product Type:</b>	Primary Antibodies
<b>Applications:</b>	WB
<b>Recommended Dilution:</b>	WB: 1:2000~1:5000
<b>Reactivity:</b>	Human, Rat
<b>Host:</b>	Rabbit
<b>Isotype:</b>	IgG
<b>Clonality:</b>	Polyclonal
<b>Immunogen:</b>	Recombinant protein of human CD158e.
<b>Specificity:</b>	CD158e polyclonal antibody detects endogenous levels of CD158e protein.
<b>Formulation:</b>	Rabbit IgG, 1mg/ml in PBS with 0.02% sodium azide, 50% glycerol, pH7.2.
<b>Concentration:</b>	1mg/ml
<b>Conjugation:</b>	Unconjugated
<b>Storage:</b>	Store at 4°C short term. Aliquot and store at -20°C long term. Avoid freeze-thaw cycles.
<b>Stability:</b>	1 year
<b>Predicted Protein Size:</b>	~ 49 kDa
<b>Gene Name:</b>	killer cell immunoglobulin like receptor, three Ig domains and long cytoplasmic tail 1
<b>Database Link:</b>	<a href="#">Entrez Gene 3811 Human P43629</a>
<b>Background:</b>	Receptor on natural killer (NK) cells for HLA Bw4 allele. Inhibits the activity of NK cells thus preventing cell lysis.
<b>Synonyms:</b>	CD158 antigen-like family member E; CD158E; CD158e; HLA-BW4-specific inhibitory NK cell receptor; Killer cell immunoglobulin-like receptor 3DL1; KIR3DL1; Natural killer-associated transcript 3; NKAT-3; NKAT3; NKB1; p70 natural killer cell receptor clones CL-2/CL-11; p70 NK receptor CL-2/CL-11
<b>Note:</b>	For research use only, not for use in diagnostic procedure.



[View online »](#)

## Product images:



Western blot (WB) analysis of CD158e polyclonal antibody at 1:2000 dilution Lane1:A549 whole cell lysate(30ug) Lane2:L02 cell membrane lysate(24ug) Lane3:HepG2 whole cell lysate(30ug) Lane4:PMVEC whole cell lysate(30ug)