

## Product datasheet for **TA392440**

### CD161 (KLRB1) Rabbit Polyclonal Antibody

#### Product data:

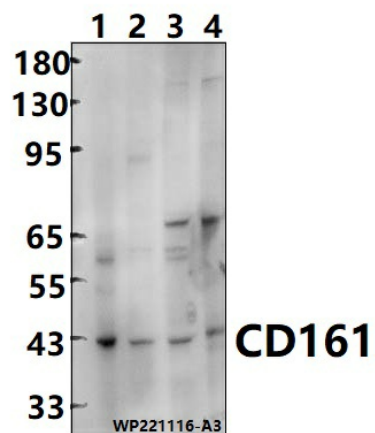
Product Type:	Primary Antibodies
Applications:	WB
Recommended Dilution:	WB: 1:5000~1:10000
Reactivity:	Rat, Mouse, Human
Host:	Rabbit
Isotype:	IgG
Clonality:	Polyclonal
Immunogen:	Recombinant protein of human CD161.
Specificity:	CD161 polyclonal antibody detects endogenous levels of CD161 protein.
Formulation:	Rabbit IgG, 1mg/ml in PBS with 0.02% sodium azide, 50% glycerol, pH7.2.
Concentration:	1mg/ml
Conjugation:	Unconjugated
Storage:	Store at 4°C short term. Aliquot and store at -20°C long term. Avoid freeze-thaw cycles.
Stability:	1 year
Predicted Protein Size:	~ 43 kDa
Gene Name:	killer cell lectin like receptor B1
Database Link:	<a href="#">Entrez Gene 3820 Human Q12918</a>
Background:	Plays an inhibitory role on natural killer (NK) cells cytotoxicity. Activation results in specific acid sphingomyelinase/SMPD1 stimulation with subsequent marked elevation of intracellular ceramide. Activation also leads to AKT1/PKB and RPS6KA1/RSK1 kinases stimulation as well as markedly enhanced T-cell proliferation induced by anti-CD3. Acts as a lectin that binds to the terminal carbohydrate Gal-alpha(1,3)Gal epitope as well as to the N-acetyllactosamine epitope. Binds also to CLEC2D/LLT1 as a ligand and inhibits NK cell-mediated cytotoxicity as well as interferon-gamma secretion in target cells.
Synonyms:	C-type lectin domain family 5 member B; CD161; HNKRP1a; Killer cell lectin-like receptor subfamily B member 1; Natural killer cell surface protein P1A; NKR-P1A



[View online »](#)

Note: For research use only, not for use in diagnostic procedure.

**Product images:**



Western blot (WB) analysis of CD161 polyclonal antibody at 1:5000 dilution Lane1:HEK293T cell membrane lysate(30ug) Lane2:MCF-7 cell membrane lysate(30ug) Lane3:CT-26 whole cell lysate(30ug) Lane4:PC12 whole cell lysate(30ug)