

Product datasheet for **TA392438S**

IL10RA Rabbit Polyclonal Antibody

Product data:

Product Type:	Primary Antibodies
Applications:	WB
Recommended Dilution:	WB: 1:1000~1:2000
Reactivity:	Human, Rat
Host:	Rabbit
Isotype:	IgG
Clonality:	Polyclonal
Immunogen:	Recombinant protein of human CD210.
Specificity:	CD210 polyclonal antibody detects endogenous levels of CD210 protein.
Formulation:	Rabbit IgG, 1mg/ml in PBS with 0.02% sodium azide, 50% glycerol, pH7.2.
Concentration:	1mg/ml
Conjugation:	Unconjugated
Storage:	Store at 4°C short term. Aliquot and store at -20°C long term. Avoid freeze-thaw cycles.
Stability:	1 year
Predicted Protein Size:	~ 80 kDa
Gene Name:	interleukin 10 receptor subunit alpha
Database Link:	Entrez Gene 3587 Human Q13651
Background:	Cell surface receptor for the cytokine IL10 that participates in IL10-mediated anti-inflammatory functions, limiting excessive tissue disruption caused by inflammation. Upon binding to IL10, induces a conformational change in IL10RB, allowing IL10RB to bind IL10 as well. In turn, the heterotetrameric assembly complex, composed of two subunits of IL10RA and IL10RB, activates the kinases JAK1 and TYK2 that are constitutively associated with IL10RA and IL10RB respectively. These kinases then phosphorylate specific tyrosine residues in the intracellular domain in IL10RA leading to the recruitment and subsequent phosphorylation of STAT3. Once phosphorylated, STAT3 homodimerizes, translocates to the nucleus and activates the expression of anti-inflammatory genes. In addition, IL10RA-mediated activation of STAT3 inhibits starvation-induced autophagy.

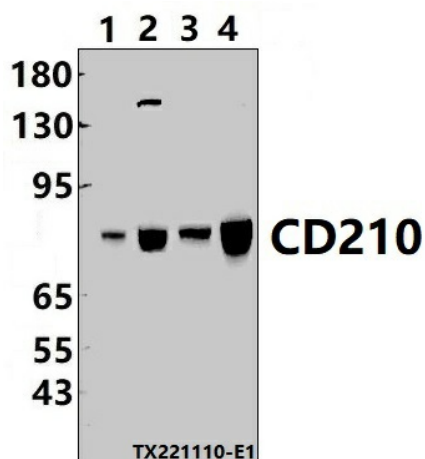


[View online »](#)

Synonyms: CDw210a; CD_antigen: CD210; IL-10 receptor subunit alpha; IL-10R1; IL-10RA; IL-10R subunit 1; IL-10R subunit alpha; IL10R; IL10RA; Interleukin-10 receptor subunit 1; Interleukin-10 receptor subunit alpha

Note: For research use only, not for use in diagnostic procedure.

Product images:



Western blot (WB) analysis of CD210 polyclonal antibody at 1:1000 dilution Lane1:L02 whole cell lysate(30ug) Lane2:A549 whole cell lysate(30ug) Lane3:LOVO cell membrane lysate(24ug) Lane4:PC12 whole cell lysate(30ug)