

## Product datasheet for **TA392437S**

### ADAM8 Rabbit Polyclonal Antibody

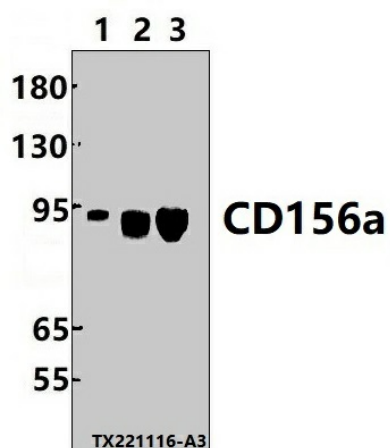
#### Product data:

Product Type:	Primary Antibodies
Applications:	WB
Recommended Dilution:	WB: 1:1000~1:2000
Reactivity:	Human, Rat, Mouse
Host:	Rabbit
Isotype:	IgG
Clonality:	Polyclonal
Immunogen:	Recombinant protein of human CD156a.
Specificity:	CD156a polyclonal antibody detects endogenous levels of CD156a protein.
Formulation:	Rabbit IgG, 1mg/ml in PBS with 0.02% sodium azide, 50% glycerol, pH7.2.
Concentration:	1mg/ml
Conjugation:	Unconjugated
Storage:	Store at 4°C short term. Aliquot and store at -20°C long term. Avoid freeze-thaw cycles.
Stability:	1 year
Predicted Protein Size:	~ 90 kDa
Gene Name:	ADAM metallopeptidase domain 8
Database Link:	<a href="#">Entrez Gene 101 Human P78325</a>
Background:	Possible involvement in extravasation of leukocytes.
Synonyms:	ADAM 8; ADAM8; CD_antigen: CD156a; Cell surface antigen MS2; Disintegrin and metalloproteinase domain-containing protein 8 (EC:3.4.24.-); MS2
Note:	For research use only, not for use in diagnostic procedure.



[View online »](#)

## Product images:



Western blot (WB) analysis of CD156a polyclonal antibody at 1:1000 dilution Lane1:Hela whole cell lysate(30ug) Lane2:RAW264.7 whole cell lysate(30ug) Lane3:C6 whole cell lysate(30ug)