

## Product datasheet for **TA392435M**

### ICOS Ligand (ICOSLG) Rabbit Polyclonal Antibody

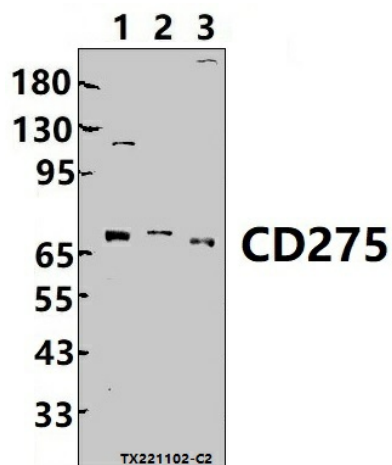
#### Product data:

Product Type:	Primary Antibodies
Applications:	WB
Recommended Dilution:	WB: 1:1000~1:2000
Reactivity:	Human, Mouse
Host:	Rabbit
Isotype:	IgG
Clonality:	Polyclonal
Immunogen:	Recombinant protein of human CD275.
Specificity:	CD275 polyclonal antibody detects endogenous levels of CD275 protein.
Formulation:	Rabbit IgG, 1mg/ml in PBS with 0.02% sodium azide, 50% glycerol, pH7.2.
Concentration:	1mg/ml
Conjugation:	Unconjugated
Storage:	Store at 4°C short term. Aliquot and store at -20°C long term. Avoid freeze-thaw cycles.
Stability:	1 year
Predicted Protein Size:	~ 70 kDa
Gene Name:	inducible T-cell costimulator ligand
Database Link:	<a href="#">Entrez Gene 23308 Human O75144</a>
Background:	Ligand for the T-cell-specific cell surface receptor ICOS. Acts as a costimulatory signal for T-cell proliferation and cytokine secretion; induces also B-cell proliferation and differentiation into plasma cells. Could play an important role in mediating local tissue responses to inflammatory conditions, as well as in modulating the secondary immune response by co-stimulating memory T-cell function (By similarity).
Synonyms:	B7 homolog 2; B7-H2; B7-like protein GI50; B7-related protein 1; B7H2; B7RP-1; B7RP1; CD_antigen: CD275; ICOSL; ICOSLG; ICOS ligand; KIAA0653
Note:	For research use only, not for use in diagnostic procedure.



[View online »](#)

## Product images:



Western blot (WB) analysis of CD275 polyclonal antibody at 1:1000 dilution Lane1:L02 whole cell lysate(30ug) Lane2:SP2/0 cell membrane lysate(24ug) Lane3:HEK293T whole cell lysate(30ug)