

Product datasheet for **TA392433S**

CD89 (FCAR) Rabbit Polyclonal Antibody

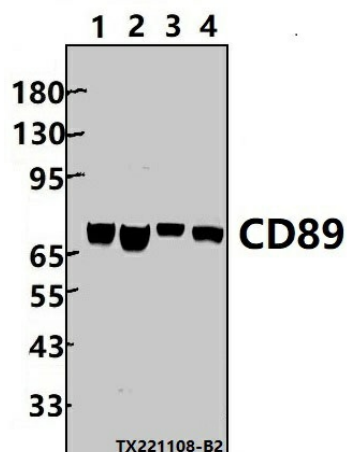
Product data:

| | |
|-------------------------|--|
| Product Type: | Primary Antibodies |
| Applications: | WB |
| Recommended Dilution: | WB: 1:2000~1:5000 |
| Reactivity: | Human, Rat, Mouse |
| Host: | Rabbit |
| Isotype: | IgG |
| Clonality: | Polyclonal |
| Immunogen: | Recombinant protein of human CD89. |
| Specificity: | CD89 polyclonal antibody detects endogenous levels of CD89 protein. |
| Formulation: | Rabbit IgG, 1mg/ml in PBS with 0.02% sodium azide, 50% glycerol, pH7.2. |
| Concentration: | 1mg/ml |
| Conjugation: | Unconjugated |
| Storage: | Store at 4°C short term. Aliquot and store at -20°C long term. Avoid freeze-thaw cycles. |
| Stability: | 1 year |
| Predicted Protein Size: | ~ 70 kDa |
| Gene Name: | Fc fragment of IgA receptor |
| Database Link: | Entrez Gene 2204 Human P24071 |
| Background: | Binds to the Fc region of immunoglobulins alpha. Mediates several functions including cytokine production. |
| Synonyms: | CD89; CD_antigen: CD89; FCAR; IgA Fc receptor; Immunoglobulin alpha Fc receptor |
| Note: | For research use only, not for use in diagnostic procedure. |



[View online »](#)

Product images:



Western blot (WB) analysis of CD89 polyclonal antibody at 1:2000 dilution Lane1:L02 whole cell lysate(30ug) Lane2:A549 whole cell lysate(30ug) Lane3:SP2/0 cell membrane lysate(24ug) Lane4:PMVEC whole cell lysate(30ug)