

Product datasheet for **TA392433M**

CD89 (FCAR) Rabbit Polyclonal Antibody

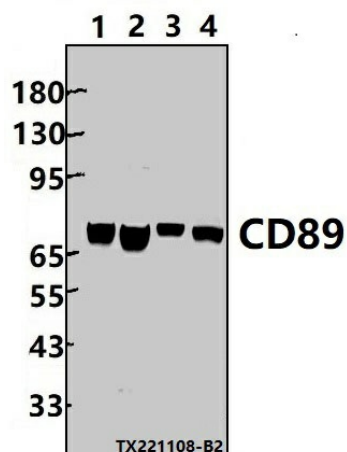
Product data:

Product Type:	Primary Antibodies
Applications:	WB
Recommended Dilution:	WB: 1:2000~1:5000
Reactivity:	Human, Rat, Mouse
Host:	Rabbit
Isotype:	IgG
Clonality:	Polyclonal
Immunogen:	Recombinant protein of human CD89.
Specificity:	CD89 polyclonal antibody detects endogenous levels of CD89 protein.
Formulation:	Rabbit IgG, 1mg/ml in PBS with 0.02% sodium azide, 50% glycerol, pH7.2.
Concentration:	1mg/ml
Conjugation:	Unconjugated
Storage:	Store at 4°C short term. Aliquot and store at -20°C long term. Avoid freeze-thaw cycles.
Stability:	1 year
Predicted Protein Size:	~ 70 kDa
Gene Name:	Fc fragment of IgA receptor
Database Link:	Entrez Gene 2204 Human P24071
Background:	Binds to the Fc region of immunoglobulins alpha. Mediates several functions including cytokine production.
Synonyms:	CD89; CD_antigen: CD89; FCAR; IgA Fc receptor; Immunoglobulin alpha Fc receptor
Note:	For research use only, not for use in diagnostic procedure.



[View online »](#)

Product images:



Western blot (WB) analysis of CD89 polyclonal antibody at 1:2000 dilution Lane1:L02 whole cell lysate(30ug) Lane2:A549 whole cell lysate(30ug) Lane3:SP2/0 cell membrane lysate(24ug) Lane4:PMVEC whole cell lysate(30ug)