

## Product datasheet for **TA392429S**

### ICAM3 Rabbit Polyclonal Antibody

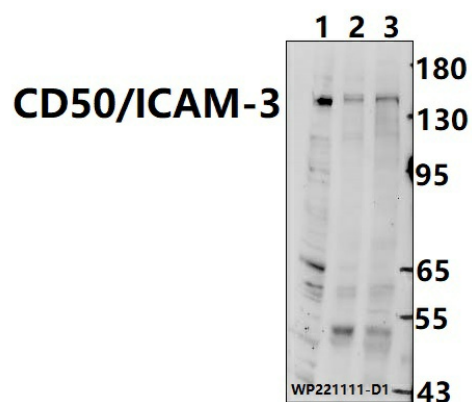
#### Product data:

Product Type:	Primary Antibodies
Applications:	WB
Recommended Dilution:	WB: 1:1000~1:2000
Reactivity:	Human, Mouse
Host:	Rabbit
Isotype:	IgG
Clonality:	Polyclonal
Immunogen:	Recombinant protein of human CD50/ICAM-3.
Specificity:	CD50/ICAM-3 polyclonal antibody detects endogenous levels of CD50/ICAM-3 protein.
Formulation:	Rabbit IgG, 1mg/ml in PBS with 0.02% sodium azide, 50% glycerol, pH7.2.
Concentration:	1mg/ml
Conjugation:	Unconjugated
Storage:	Store at 4°C short term. Aliquot and store at -20°C long term. Avoid freeze-thaw cycles.
Stability:	1 year
Predicted Protein Size:	~ 140 kDa
Gene Name:	intercellular adhesion molecule 3
Database Link:	<a href="#">Entrez Gene 3385 Human P32942</a>
Background:	ICAM proteins are ligands for the leukocyte adhesion protein LFA-1 (integrin alpha-L/beta-2). ICAM3 is also a ligand for integrin alpha-D/beta-2. In association with integrin alpha-L/beta-2, contributes to apoptotic neutrophil phagocytosis by macrophages.
Synonyms:	CD50; CDw50; ICAM-3; ICAM-R; Intercellular adhesion molecule 3
Note:	For research use only, not for use in diagnostic procedure.



[View online »](#)

## Product images:



Western blot (WB) analysis of CD50/ICAM-3 polyclonal antibody at 1:1000 dilution  
Lane1:SGC7901 whole cell lysate(30ug)  
Lane2:MCF-7 whole cell lysate(30ug) Lane3:CT-26 whole cell lysate(30ug)