

Product datasheet for **TA392427**

CD44 Rabbit Polyclonal Antibody

Product data:

| | |
|-------------------------|--|
| Product Type: | Primary Antibodies |
| Applications: | WB |
| Recommended Dilution: | WB: 1:5000~1:10000 |
| Reactivity: | Human, Rat |
| Host: | Rabbit |
| Isotype: | IgG |
| Clonality: | Polyclonal |
| Immunogen: | Recombinant protein of human CD44. |
| Specificity: | CD44 polyclonal antibody detects endogenous levels of CD44 protein. |
| Formulation: | Rabbit IgG, 1mg/ml in PBS with 0.02% sodium azide, 50% glycerol, pH7.2. |
| Concentration: | 1mg/ml |
| Conjugation: | Unconjugated |
| Storage: | Store at 4°C short term. Aliquot and store at -20°C long term. Avoid freeze-thaw cycles. |
| Stability: | 1 year |
| Predicted Protein Size: | ~ 75 kDa |
| Gene Name: | CD44 molecule (Indian blood group) |
| Database Link: | Entrez Gene 960 Human P16070 |



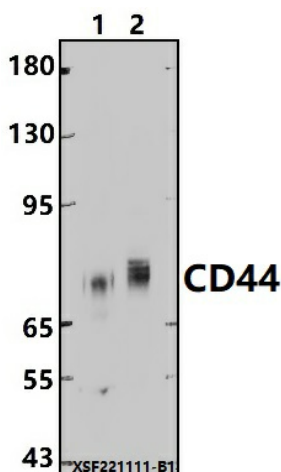
[View online »](#)

Background: CD44 is a type I transmembrane glycoprotein that mediates cell-cell and cell-matrix interaction through its affinity for hyaluronic acid (HA) and possibly through other parts of the extracellular matrix (ECM). CD44 is highly polymorphic, possesses a number of alternative splice variants and undergoes extensive post-translational modifications. Increased surface levels of CD44 are characteristic of T cell activation, and expression of the protein is upregulated during the inflammatory response. Research studies have shown that interactions between CD44 and HER2 are linked to an increase in ovarian carcinoma cell growth. CD44 interacts with ezrin, radixin, and moesin (ERM), linking the actin cytoskeleton to the plasma membrane and the ECM. CD44 is constitutively phosphorylated at Ser325 in resting cells. Activation of PKC results in phosphorylation of Ser291, dephosphorylation of Ser325, disassociation of ezrin from CD44, and directional motility.

Synonyms: CD44; CD44 antigen; CDw44; ECMR-III; Epican; Extracellular matrix receptor III; GP90 lymphocyte homing/adhesion receptor; Heparan sulfate proteoglycan; Hermes antigen; HUTCH-I; Hyaluronate receptor; LHR; MDU2; MDU3; MIC4; PGP-1; PGP-I; Phagocytic glycoprotein 1; Phagocytic glycoprotein I

Note: For research use only, not for use in diagnostic procedure.

Product images:



Western blot (WB) analysis of CD44 polyclonal antibody at 1:5000 dilution. Lane 1: C6 whole cell lysate (30ug). Lane 2: MCF-7 cell membrane lysate (24ug).