

Product datasheet for **TA392426M**

CD40L (CD40LG) Rabbit Polyclonal Antibody

Product data:

| | |
|-------------------------|--|
| Product Type: | Primary Antibodies |
| Applications: | WB |
| Recommended Dilution: | WB: 1:2000~1:5000 |
| Reactivity: | Human |
| Host: | Rabbit |
| Isotype: | IgG |
| Clonality: | Polyclonal |
| Immunogen: | Recombinant protein of human CD154. |
| Specificity: | CD154 polyclonal antibody detects endogenous levels of CD154 protein. |
| Formulation: | Rabbit IgG, 1mg/ml in PBS with 0.02% sodium azide, 50% glycerol, pH7.2. |
| Concentration: | 1mg/ml |
| Conjugation: | Unconjugated |
| Storage: | Store at 4°C short term. Aliquot and store at -20°C long term. Avoid freeze-thaw cycles. |
| Stability: | 1 year |
| Predicted Protein Size: | ~ 34 kDa |
| Gene Name: | CD40 ligand |
| Database Link: | Entrez Gene 959 Human P29965 |

[View online »](#)

Background:

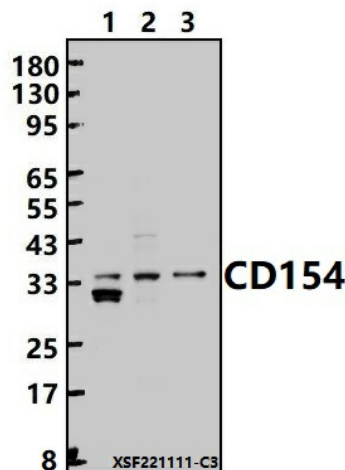
CD40 ligand (CD40L), also known as CD154, TRAP, and gp39, is the ligand for the TNF receptor family member CD40. CD40L is expressed either as a soluble cytokine or as a homotrimeric transmembrane protein. CD40L primarily expressed on the surface of T-cells, but has also been reported in blood platelets, mast cells, basophils, NK cells, and B-cells. It plays an important role in stimulating B-cell cell proliferation and survival and promotes immunoglobulin class switching and secretion of IgE. Signals generated by CD40 vary depending on cell type and include activation of MAPK pathways as well as NF- κ B. Mutations within the CD40L gene are associated with X-linked hyper-IgM syndrome characterized by high serum levels of IgM and decreased levels of other isotypes. The CD40L/CD40 pathway is an important area of interest in the study of cancer, vascular diseases, and inflammatory disorders.

Synonyms:

CD40 ligand; CD40 ligand, membrane form; CD40 ligand, soluble form; CD40-L; CD40L; CD40LG; CD154; sCD40L; T-cell antigen Gp39; TNF-related activation protein; TNFSF5; TRAP; Tumor necrosis factor ligand superfamily member 5

Note:

For research use only, not for use in diagnostic procedure.

Product images:


Western blot (WB) analysis of CD154 polyclonal antibody at 1:2000 dilution Lane1:MCF-7 cell membrane lysate(24ug) Lane2:L02 cell membrane lysate(24ug) Lane3:EC9706 cell membrane lysate(24ug)