

## Product datasheet for **TA392424S**

### Integrin alpha 5 (ITGA5) Rabbit Polyclonal Antibody

#### Product data:

Product Type:	Primary Antibodies
Applications:	WB
Recommended Dilution:	WB: 1:2000~1:5000
Reactivity:	Human, Mouse
Host:	Rabbit
Isotype:	IgG
Clonality:	Polyclonal
Immunogen:	Recombinant protein of human Integrin $\alpha$ 5.
Specificity:	Integrin $\alpha$ 5 polyclonal antibody detects endogenous levels of Integrin $\alpha$ 5 protein.
Formulation:	Rabbit IgG, 1mg/ml in PBS with 0.02% sodium azide, 50% glycerol, pH7.2.
Concentration:	1mg/ml
Conjugation:	Unconjugated
Storage:	Store at 4°C short term. Aliquot and store at -20°C long term. Avoid freeze-thaw cycles.
Stability:	1 year
Predicted Protein Size:	~ 130 kDa
Gene Name:	integrin subunit alpha 5
Database Link:	<a href="#">Entrez Gene 3678 Human P08648</a>

**Background:** Integrins are  $\alpha/\beta$  heterodimeric cell surface receptors that play a pivotal role in cell adhesion and migration, as well as in growth and survival. The integrin family contains at least 18  $\alpha$  and 8  $\beta$  subunits that form 24 known integrins with distinct tissue distribution and overlapping ligand specificities. Integrins not only transmit signals to cells in response to the extracellular environment (outside-in signaling), but also sense intracellular cues to alter their interaction with the extracellular environment (inside-out signaling). Integrin  $\alpha$ 5/ $\beta$ 1 is involved in multiple biological processes including embryonic development, angiogenesis and tumor metastasis. By interaction with its fibronectin ligand,  $\alpha$ 5/ $\beta$ 1 transduces signals that regulate cell adhesion, migration, matrix assembly and cytoskeletal organization.

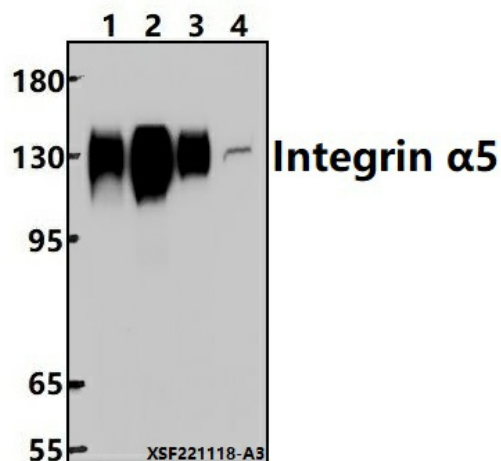


[View online »](#)

**Synonyms:** CD49 antigen-like family member E; CD49e; Fibronectin receptor subunit alpha; FNRA; Integrin alpha-5; Integrin alpha-5 heavy chain; Integrin alpha-5 light chain; Integrin alpha-F; ITGA5; VLA-5

**Note:** For research use only, not for use in diagnostic procedure.

**Product images:**



Western blot (WB) analysis of Integrin  $\alpha$ 5 polyclonal antibody at 1:2000 dilution  
Lane1:A549 whole cell lysate(30ug) Lane2:L02 cell membrane lysate(24ug) Lane3:SGC7901 whole cell lysate(30ug) Lane4:BV2 whole cell lysate(30ug)