

## Product datasheet for **TA392421**

### Adenine Nucleotide Translocator 2 (SLC25A5) Rabbit Polyclonal Antibody

#### Product data:

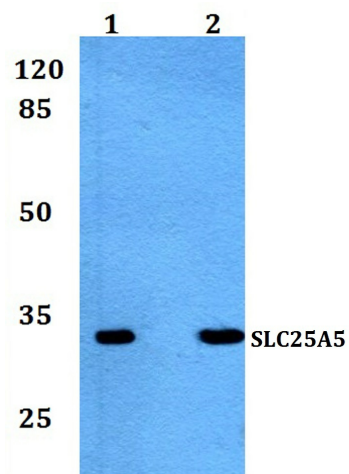
Product Type:	Primary Antibodies
Applications:	WB
Recommended Dilution:	WB: 1:1000~1:2000
Reactivity:	Human, Mouse
Host:	Rabbit
Isotype:	IgG
Clonality:	Polyclonal
Immunogen:	Synthetic peptide, corresponding to Human SLC25A5.
Specificity:	SLC25A5 polyclonal antibody detects endogenous levels of SLC25A5 protein.
Formulation:	Rabbit IgG, 1mg/ml in PBS with 0.02% sodium azide, 50% glycerol, pH7.2.
Concentration:	1mg/ml
Conjugation:	Unconjugated
Storage:	Store at 4°C short term. Aliquot and store at -20°C long term. Avoid freeze-thaw cycles.
Stability:	1 year
Predicted Protein Size:	~ 35 kDa
Gene Name:	solute carrier family 25 member 5
Database Link:	<a href="#">Entrez Gene 292 Human P05141</a>
Background:	Adenine nucleotide translocase 2 (ANT2/SLC25A5) is a member of the adenine nucleotide translocase family of mitochondrial inner membrane proteins that function differently in metabolic and apoptotic pathways. Research studies indicate that ANT2 expression in undifferentiated, proliferating cells correlates with the rate of glycolytic metabolism and may be an indicator of carcinogenesis. Suppression of ANT2/SLC25A5 expression by specific RNA interference in human breast cancer cells promotes apoptosis and inhibits tumor cell growth, which suggests a cytoprotective role of ANT2/SLC25A5.
Synonyms:	Adenine nucleotide translocator 2; ADP,ATP carrier protein, fibroblast isoform; ADP,ATP carrier protein 2; ADP/ATP translocase 2; ANT 2; ANT2; DP/ATP translocase 2, N-terminally processed; Solute carrier family 25 member 5



[View online »](#)

Note: For research use only, not for use in diagnostic procedure.

### Product images:



Western blot (WB) analysis of SLC25A5 polyclonal antibody at 1:1000 dilution Lane1:A549 whole cell lysate(30ug) Lane2:HEK293T whole cell lysate(30ug) Lane3:SGC7901 whole cell lysate(30ug) Lane4:CT-26 whole cell lysate(30ug)